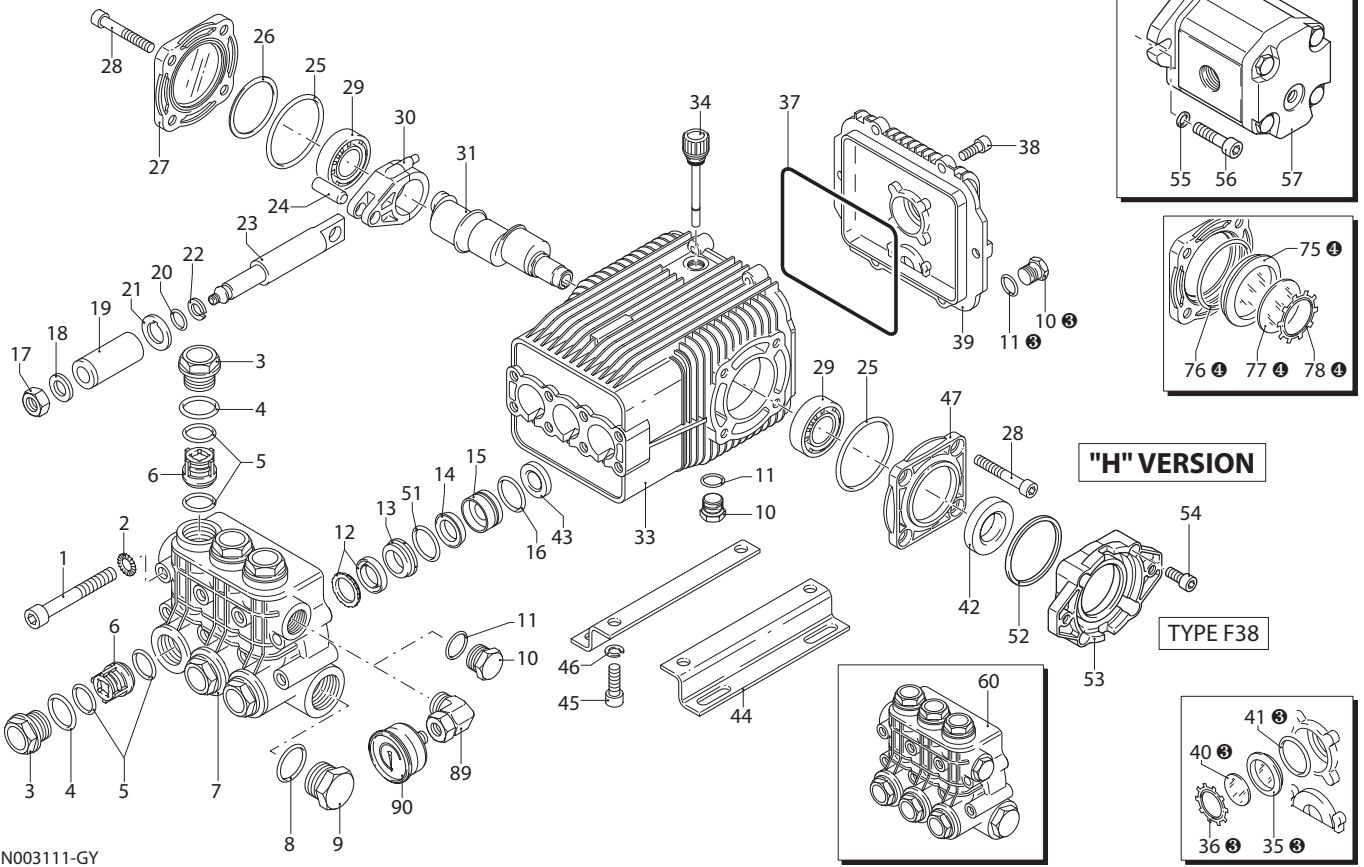


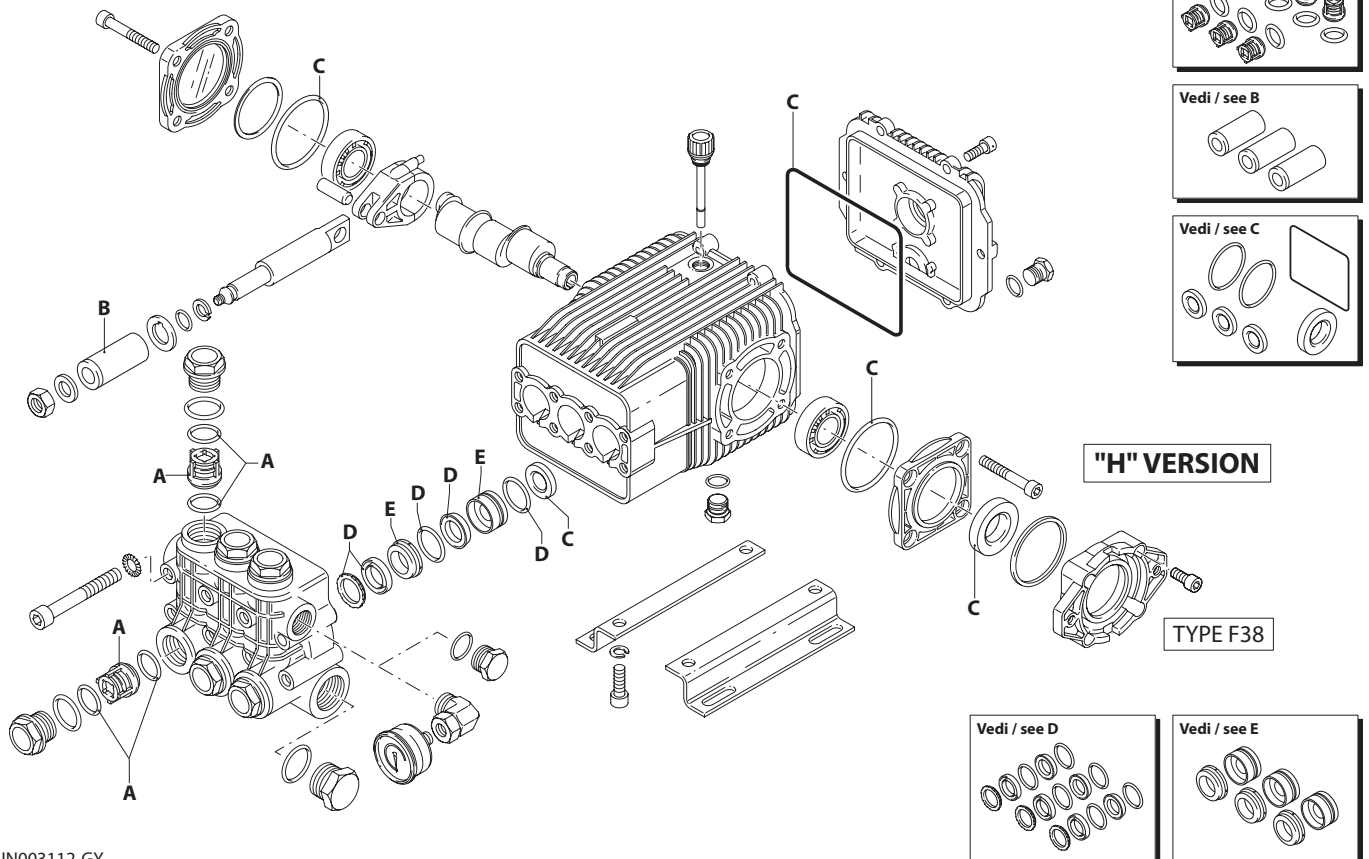
HYD-XW

1450_{rpm}



UN003111-GY

KIT RICAMBI / PART KITS



UN003112-GY

HYD-XW

MODELLO - MODEL:
30.10



Pos.	Cod. Part n°	Denominazione	Description	Q.tà Q.ty	Note Vedi / See	Pos.	Cod. Part n°	Denominazione	Description	Q.tà Q.ty	Note Vedi / See
1	1940260	Vite TCEI M 10x80	Screw	8		41	1140450	OR Ø 20,24x2,62	O-Ring	1	⊗
2	650530	Rosetta	Washer	8		42	820680	Anello tenuta	Seal	1	
3	1940140	Tappo	Plug	6		43	1940560	Anello tenuta	Seal	3	
4	1940150	Anello	Ring	6		44	1940370	Piede	Base	2	Optional
5	1140450	OR Ø 20,24x2,62	O-Ring	12		45	1940380	Vite TCEI M 10x18	Screw	4	Optional
6	1949050	Valvola completa	Complete valve	6		46	200231	Rosetta	Washer	4	Optional
7	1941210	Testa pompa	Pump head	1		47	1941240	Supporto aperto	Open bearing sup.	1	
8	550350	OR Ø 23,81x2,62	O-Ring	1		51	1941220	OR Ø 22x2	O-Ring	3	
9	1140300	Tappo 3/4" G	Plug	1		52	1780430	Centraggio	Bushing	1	
10	1980740	Tappo 3/8" G	Plug	3	⊗	53	1383550	Flangia	Flange	1	
11	740290	OR Ø 14x1,78	O-Ring	3	⊗	54	620610	Vite TCEI M 8x30	Screw	4	
12	1940270	Guarn.+anello	Gasket w/ ring	3		55	900270	Rondella	Washer	2	
13	1940200	Guida pist. ant.	Front piston guide	3		56	540300	Vite TCEI M 10x30	Screw	2	
14	1940480	Guarnizione	Gasket	3		57	4770	Motore	Motor	1	
15	1940460	Guida pist. post.	Rear piston guide	3		60	1949203	Prem.testa	Head pre-assembly	1	
16	820490	OR Ø 34,65x1,78	O-Ring	3		75	1941270	Livello olio	Oil indicator	1	④
17	1940570	Dado	Nut	3		76	100410	OR Ø 34,6x2,62	O-Ring	1	④
18	1940580	Rosetta	Washer	3		77	1941260	Disco di contrasto	Disc	1	④
19	1420120	Pistone	Piston	3		78	1941290	Anello elastico	Snap ring	1	④
20	880840	OR Ø 9,25x1,78	O-Ring	3		89	900210	Raccordo	Fitting	1	
21	960460	Disco separatore	Spacer	3		90	1381580	Manometro	Pressure gauge	1	
22	1940120	Anello	Ring	3							
23	1940070	Pistone di guida	Guiding piston	3							
24	1940060	Spinotto	Piston pin	3							
25	1941380	OR Ø 66,34x2,62	O-Ring	2							
26	1941390	Spessore 0,05 mm	0,05 mm shim	1÷3							
	1941400	Spessore 0,10 mm	0,10 mm shim	1÷3							
	1941410	Spessore 0,19 mm	0,19 mm shim	1÷3							
	1941420	Spessore 0,25 mm	0,25 mm shim	1÷3							
27	1949011	Coperchio lat. compl.	Compl. side cover	1							
28	850370	Vite TCEI M 8x16	Screw	8							
29	1140410	Cuscinetto	Bearing	2							
30	1940050	Biella	Con-rod	3							
31	1942050	Albero eccentrico	Crank shaft	1							
33	1941330	Corpo pompa	Pump housing	1							
34	1140370	Tappo olio	Oil cap	1							
35	1260250	Livello olio	Oil indicator	1	⊗						
36	1260430	Anello elastico	Snap ring	1	⊗						
37	1940410	OR Ø 132x3	O-Ring	1							
38	1200430	Vite TCEI M 6x16	Screw	6							
39	1949010	Cop. post. compl.	Complete cover	1							
40	1780690	Disco di contrasto	Disc	1	⊗						

KIT RICAMBI - PART KITS

A=KIT 2780 valvole valves		B=KIT 1891 pistoni pistons		C=KIT 2781 tenute olio oil seals		D=KIT 2783 tenute acqua water seals	
Pos.	Q.ty	Pos.	Q.ty	Pos.	Q.ty	Pos.	Q.ty
5	6	19	3	25	2	12	3
6	6			37	1	14	3
				42	1	16	3
				43	3	51	3

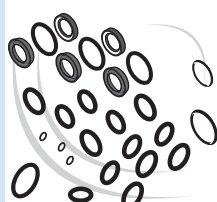
F=KIT 2785 guida pistoni pistons guide							
Pos.	Q.ty	Pos.	Q.ty	Pos.	Q.ty	Pos.	Q.ty
13	3						
15	3						

SIMBOLOGIA - SYMBOLS

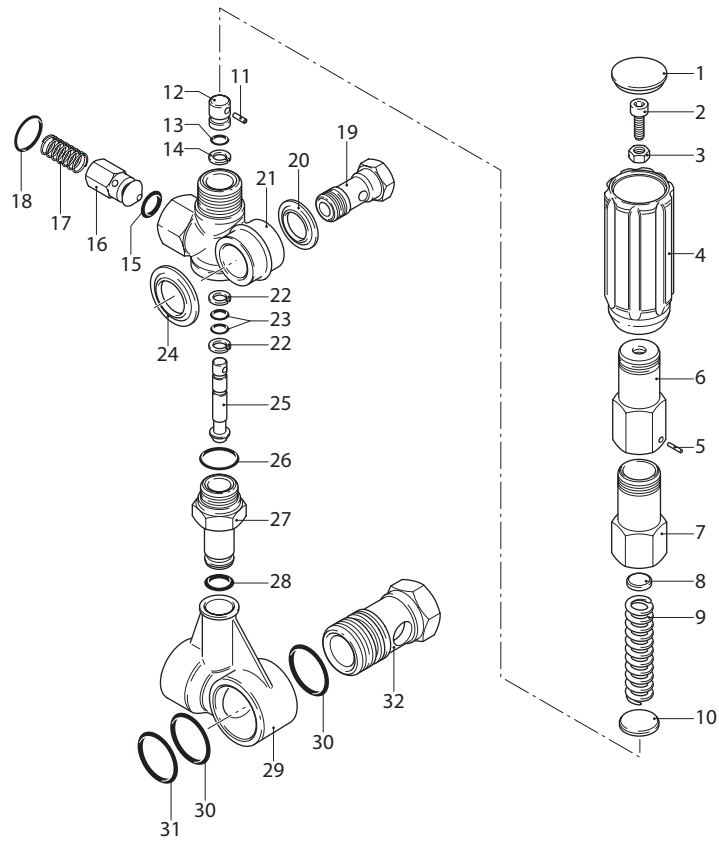
C = Coppia serraggio (Tolleranza +0 / -10% Nm)
C = Torque wrench (Allowance +0 / -10% Nm)
⊗ Compreso nel cod. 1789010 / Part of part n° 1789010
④ Compreso nel cod. 1949011 / Part of part n° 1949011

PARTI SPECIALI IN VITON SPECIAL PARTS

Cod. Part n°	Denominazione Description	Q.tà Q.ty
2779	Tenute acqua/Water seals Ø 22	1

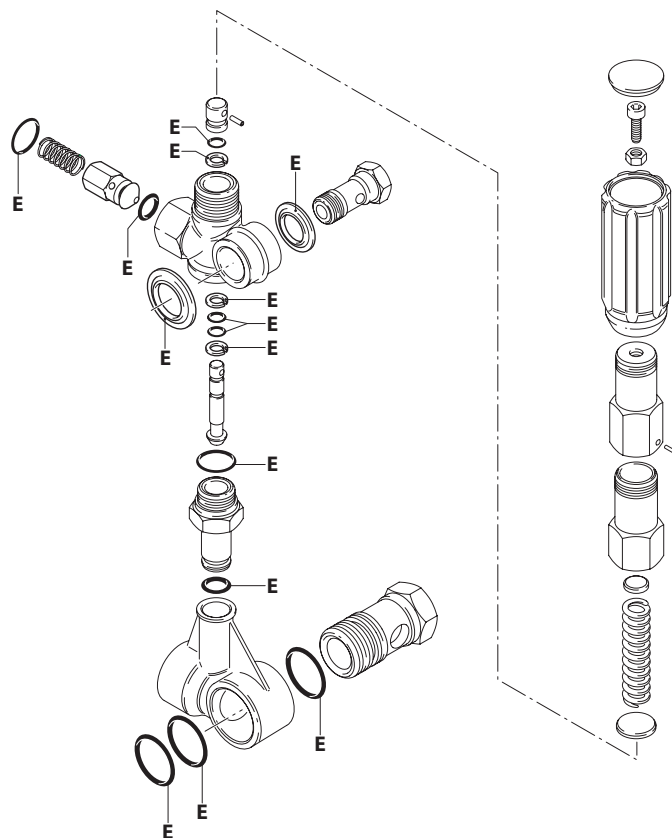


GYMATIC 3/B



UN003109-GY

KIT RICAMBI / PART KITS



UN003110-GY

GYMATIC 3/B

Pos.	Cod. Part n°	Denominazione	Description	Q.tà Q.ty	Note Vedi / See	Pos.	Cod. Part n°	Denominazione	Description	Q.tà Q.ty	Note Vedi / See
1	1560580	Tappo manopola	Knob plug	1							
2	540290	Vite TCEI M 8x25	Screw	1							
3	1660210	Dado M 8	Nut	1							
4	1560400	Manopola	Handle	1							
5	1080070	Spina	Pin	1							
6	1560420	Vite di regolazione	Adjusting screw	1							
7	1560410	Guida molla	Spring guide	1							
8	1560440	Piattello	Plate	1							
9	1560350	Molla	Spring	1							
10	1080610	Piattello molla	Spring plate	1							
11	1080660	Spina	Pin	1							
12	1080540	Pistone superiore	Upper piston	1							
13	391000	OR Ø 9,13x2,62	O-Ring	1							
14	1080640	Anello antiestrusione	Back-up ring	1							
15	1560150	OR Ø 5,94x3,53	O-Ring	1							
16	1560100	Otturatore	Jet	1							
17	1560140	Molla	Spring	1							
18	180101	OR Ø 17,5x2	O-Ring	1							
19	1540272	Raccordo 3/8" G	Fitting 3/8" G	1							
20	1540110	Rondella tenuta	Washer	1	Ø 3/8"						
21	1560010	Corpo valvola	Valve housing	1							
22	1080550	Anello antiestrusione	Back-up ring	2							
23	480480	OR Ø 4,48x1,78	O-Ring	2							
24	1560280	Rondella tenuta	Washer	1	Ø 3/8"						
25	1560320	Pistone inferiore	Lower piston	1							
26	880270	OR Ø 17,17x1,78	O-Ring	1							
27	1560051	Niples by-pass	By-pass adaptor	1							
28	390080	OR Ø 11,91x2,62	O-Ring	1							
29	1560550	Corpo by-pass	By-pass housing	1	3/4" G						
30	770260	OR Ø 23,52x1,78	O-Ring	2							
31	550350	OR Ø 23,81x2,62	O-Ring	1							
32	1560760	Raccordo 3/4" G	Fitting 3/4" G	1	Ott./Brass						

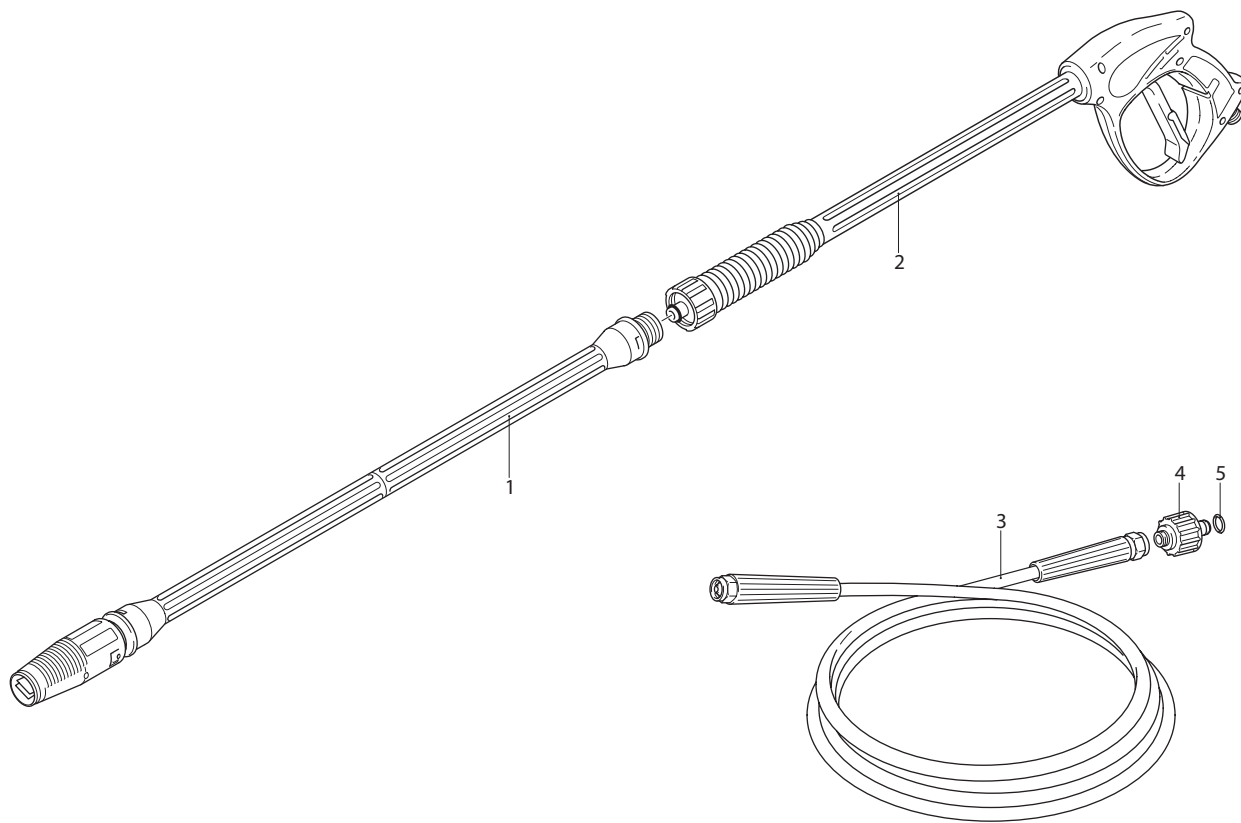
KIT RICAMBI - PART KITS

E=KIT 2611 OR O-Rings							
Pos.	Q.ty	Pos.	Q.ty	Pos.	Q.ty	Pos.	Q.ty
13	1	23	2				
14	1	24	1				
15	1	26	1				
18	1	28	1				
20	1	30	2				
22	2	31	1				

Pos.	Q.ty	Pos.	Q.ty	Pos.	Q.ty	Pos.	Q.ty

SIMBOLOGIA - SYMBOLS

--	--	--	--



UN003108-GY

Pos.	Cod. Part n°	Denominazione	Description	Q.tà Q.ty	Note Vedi / See	Pos.	Cod. Part n°	Denominazione	Description	Q.tà Q.ty	Note Vedi / See
1	3156	Testina+lancia	Head+lance	1							
2	40771	Pistola	Gun	1							
3	1271900	Tubo di mandata	High pressure hose	1							
4	1122260	Raccordo	Fitting	1							
5	2000770	OR ø 10x2	O-Ring	1							

SIMBOLOGIA - SYMBOLS

--	--	--	--

