

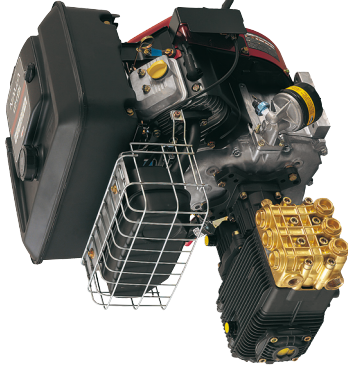


**ANNOVI
REVERBERI**
The Power of Experience

ANNOVI REVERBERI S.p.A.
Via M. L. King, 3 - 41122 Modena (Italy)
Tel. (+39) 059.414.411 - Fax (+39) 059.253.505
E - Mail: industria@annovireverberi.it

Pump type
Type de pompe
Pumpetyp
Tipo de bomba
Tipo pompa

GEARBOX DRIVE XW



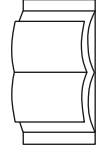
TECHNICAL DATA / DONNEES TECHNIQUES / TECHNISCHE ANGABEN
CARACTERISTICAS TECNICAS / CARATTERISTICHE TECNICHE

PUMP TYPE TYPE DE POMPE PUMPETYP TIPO DE BOMBA TIPO POMPA	CAPACITY DEBIT LEISTUNG CAUDAL PORTATA		PRESSURE PRESSION DRUCK PRESION PRESSIONE		RPM TOURS/1' U.P.M. REVOLUCIONES/1' N° GIRI/1'	WEIGHT POIDS GEWICHT PESO PESO
	l/min	gpm (US)	bar	psi		
XW 21.20 CR B&S VANGUARD 303442-1169-E1	21	5.55	200	2900	3600	60
XW 26.15 CR B&S VANGUARD 303442-1169-E1	26	6.87	150	2200	3600	60
XW 30.15 CR B&S VANGUARD 350447-1185-E1	30	7.92	150	2200	3600	53

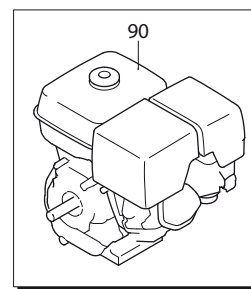
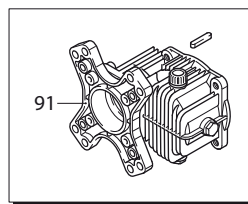
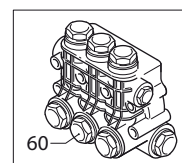
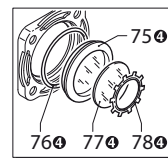
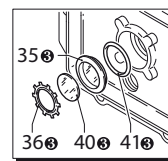
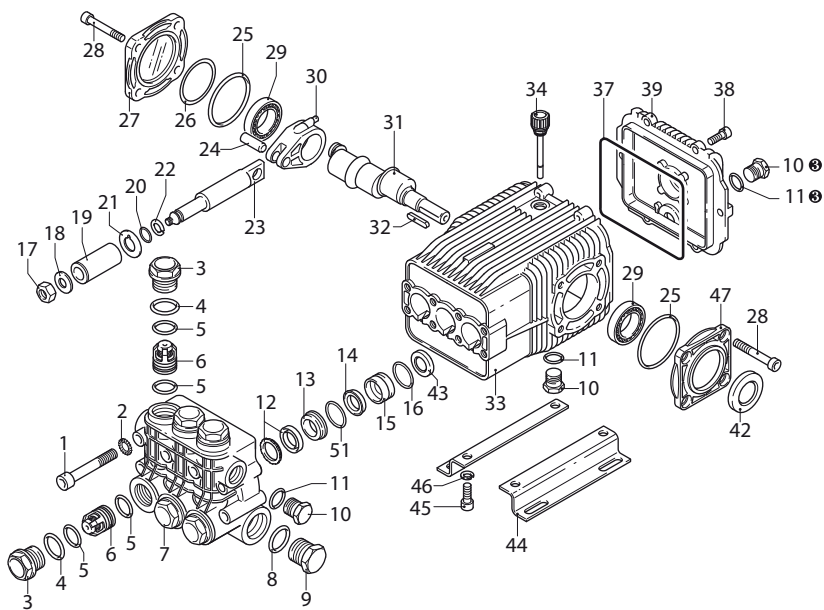


ATTENTION:
ATTENTION:
ACHTUNG:
ATENCIÓN:
ATTENZIONE:

- This manual must be read before beginning installation of the unit.
- Ce livret doit être lu avant d'installer et d'employer le produit.
- Das vorliegende Handbuch ist vor der Installation und dem Gebrauch des Produkts aufmerksam zu lesen.
- Este manual debe ser leído antes de proceder a la instalación y uso del producto.
- Il presente libretto va letto prima di procedere all'installazione ed uso del prodotto.

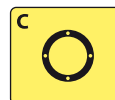
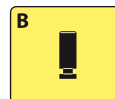
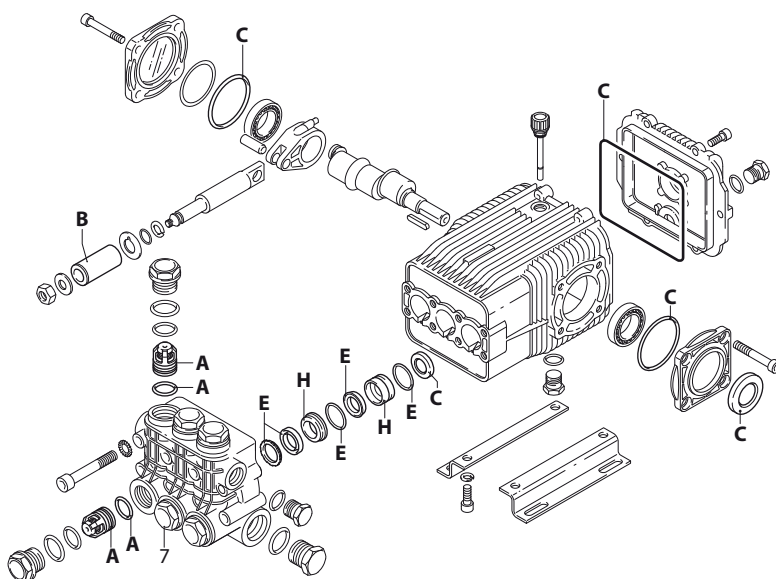


GEARBOX DRIVE XW



UN003358-AV

KIT RICAMBI / PART KITS



UN003359-AV

GEARBOX DRIVE XW



Pos.	Cod. Part n°	Denominazione	Description	Q.tà Q.ty	Note Vedi / See	Pos.	Cod. Part n°	Denominazione	Description	Q.tà Q.ty	Note Vedi / See
1	1940260	Vite TCEI M 10x80	Screw	8	⊕ 50 Nm	31	1940180	Albero eccentrico	Crank shaft	1	○
2	650530	Rosetta	Washer	8			1940160	Albero eccentrico	Crank shaft	1	● □
3	1940140	Tappo	Plug	6	⊕ 68 Nm	32	650250	Linguetta	Key	1	
4	1940150	Anello	Ring	6		33	1941330	Corpo pompa	Pump housing	1	
5	1140450	OR ø 20,24x2,62	O-Ring	12		34	1140370	Tappo olio	Oil cap	1	
6	1949050	Valvola completa	Complete valve	6		35	1260250	Livello olio	Oil indicator	1	⊕
7	1940021	Testa pompa	Pump head	1	○ ●	36	1260430	Anello elastico	Snap ring	1	⊕
	1941210	Testa pompa	Pump head	1	□	37	1940410	OR ø 132x3	O-Ring	1	
8	550350	OR ø 23,81x2,62	O-Ring	1		38	1200430	Vite TCEI M 6x16	Screw	6	
9	1140300	Tappo 3/4" G	Plug	1		39	1949010	Cop. post. compl.	Complete cover	1	
10	1980740	Tappo 3/8" G	Plug	3	⊕	40	1780690	Disco di contrasto	Disc	1	⊕
11	740290	OR ø 14x1,78	O-Ring	3	⊕	41	1140450	OR Ø 20,24x2,62	O-Ring	1	⊕
12	1940440	Guarn.+anello	Gasket w/ ring	3	Ø 20 ○ ●	42	820680	Anello tenuta	Seal	1	
	1940270	Guarn.+anello	Gasket w/ ring	3	Ø 22 □	43	1940560	Anello tenuta	Seal	3	
13	1940430	Guida pist. ant.	Front piston guide	3	Ø 20 ○ ●	44	1940370	Piede	Base	2	Optional
	1940200	Guida pist. ant.	Front piston guide	3	Ø 22 □	45	1940380	Vite TCEI M 10x18	Screw	4	Optional
14	1940470	Guarnizione	Gasket	3	Ø 20 ○ ●	46	200231	Rosetta	Washer	4	Optional
	1940480	Guarnizione	Gasket	3	Ø 22 □	47	1941240	Supporto aperto	Open bearing sup.	1	
15	1940450	Guida pist. post.	Rear piston guide	3	Ø 20 ○ ●	51	1941220	OR ø 22x2	O-Ring	3	Tagliato/Cutted
	1940460	Guida pist. post.	Rear piston guide	3	Ø 22 □	60	1949200	Prem.testa	Head pre-assembly	1	Ø 20 ○ ●
16	820490	OR ø 34,65x1,78	O-Ring	3			1949203	Prem.testa	Head pre-assembly	1	Ø 22 □
17	1940570	Dado	Nut	3	⊕ 12 Nm	75	1941270	Livello olio	Oil indicator	1	⊕
18	1940580	Rosetta	Washer	3		76	100410	OR Ø 34,6x2,62	O-Ring	1	⊕
19	1420430	Pistone	Piston	3	Ø 20 ○ ●	77	1941260	Disco di contrasto	Disc	1	⊕
	1420120	Pistone	Piston	3	Ø 22 □	78	1941290	Anello elastico	Snap ring	1	⊕
20	880840	OR ø 9,25x1,78	O-Ring	3			4923	Motore	Motor	1	○ ●
21	960460	Disco separatore	Spacer	3		90	4929	Motore	Motor	1	□
22	1940120	Anello	Ring	3		91	1698	Riduttore	Gear box	1	
23	1940070	Pistone di guida	Guiding piston	3							
24	1940060	Spinotto	Piston pin	3							
25	1941380	OR ø 66,34x2,62	O-Ring	2							
26	1941390	Spessore 0,05 mm	0,05 mm shim	1÷3							
	1941400	Spessore 0,10 mm	0,10 mm shim	1÷3							
	1941410	Spessore 0,19 mm	0,19 mm shim	1÷3							
	1941420	Spessore 0,25 mm	0,25 mm shim	1÷3							
27	1949011	Coperchio lat. compl.	Comp. side cover	1							
28	850370	Vite TCEI M 8x16	Screw	8	⊕ 24,5 Nm						
29	1140410	Cuscinetto	Bearing	2							
30	1940050	Biella	Con-rod	3							

KIT RICAMBI - PART KITS

A=KIT 2780 valvole valves		B=KIT 2650 ø 20 pistoni pistons		B=KIT 1891 ø 22 pistoni pistons		C=KIT 2873 tenute olio oil seals	
Pos.	Q.ty	Pos.	Q.ty	Pos.	Q.ty	Pos.	Q.ty
5	6	19	3	19	3	25	2
6	6					37	1
						42	1
						43	3

E=KIT 2782 ø 20 tenute acqua water seals		E=KIT 2783 ø 22 tenute acqua water seals		H=KIT 2784 ø 20 guida pistoni pistons guide		H=KIT 2785 ø 22 guida pistoni pistons guide	
Pos.	Q.ty	Pos.	Q.ty	Pos.	Q.ty	Pos.	Q.ty
12	3	12	3	13	3	13	3
14	3	14	3	15	3	15	3
16	3	16	3				
51	3	51	3				

SIMBOLOGIA - SYMBOLS

○ Per / For WX 21.20 (B&S)	● Per / For WX 26.15 (B&S)	□ Per / For WX 30.15 (B&S)
----------------------------------	----------------------------------	----------------------------------

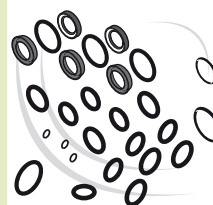
⊕ Compreso nel cod. 1949010 / Part of part n° 1949010

⊕ Compreso nel cod. 1949011 / Part of part n° 1949011

⊕ = Coppia serraggio (Tolleranza +0 / -10% Nm)

⊕ = Torque wrench (Allowance +0 / -10% Nm)

PARTI SPECIALI IN VITON SPECIAL PARTS



Cod. Part n°	Denominazione Description	Q.tà Q.ty
2778	Tenute acqua/Water seals ø 20	1
2779	Tenute acqua/Water seals ø 22	1

