

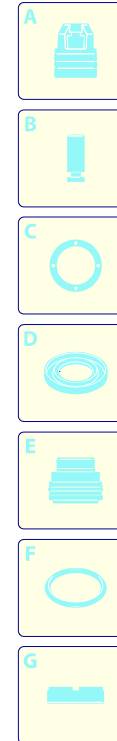
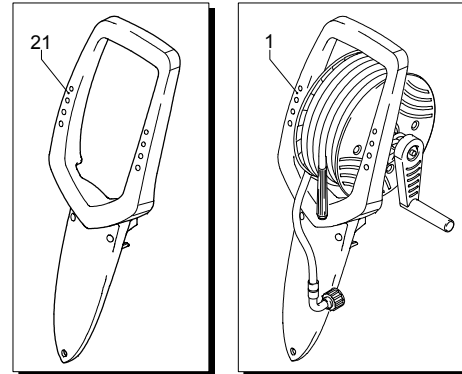
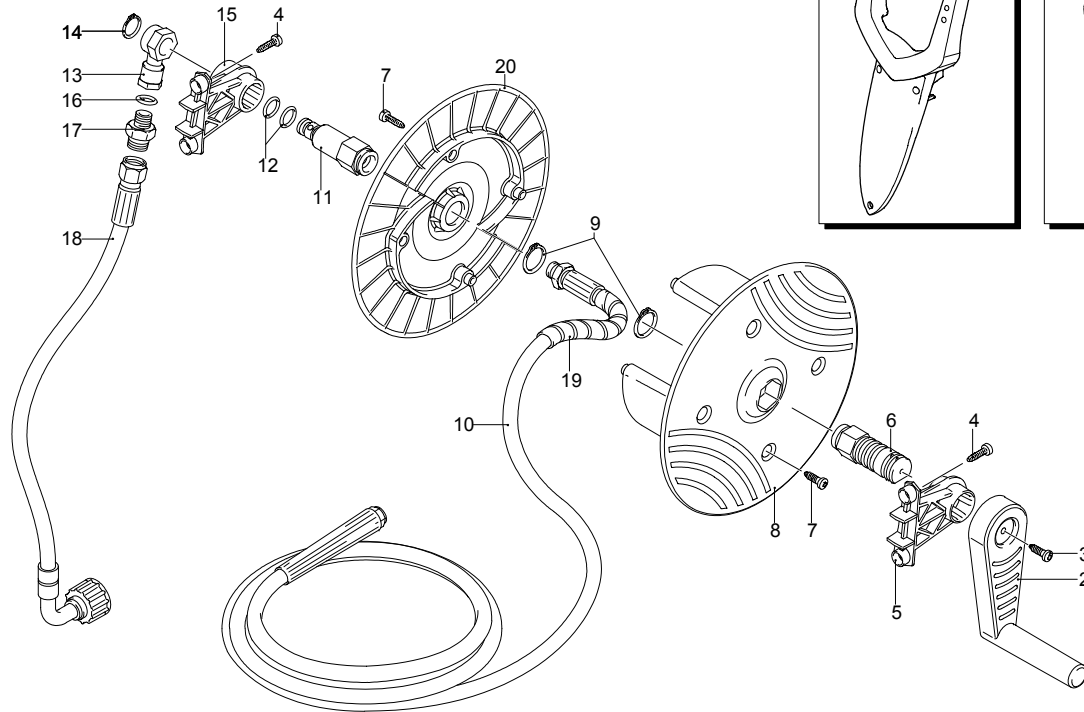
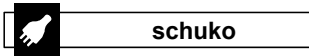
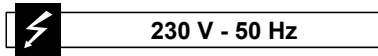
Modell PW 1700 WHR

Ausführung: PW 1700 WHR (08)

Seriennummer:

Code: 12622

01/02/2010



Gültigkeit	Pos.	Code	Bezeichnung	Menge
	1	40792	Vormontage Schlauchhaspel	1
	2	2360150	Hebel	1
	3	2100300	Schraube	1
	4	2100300	Schraube	1
	5	2440490	Bügel	1
	6	2440500	Zapfen	1
	7	2560720	Schraube	1
	8	2360230	Scheibe	1
	9	380420	Ring	1
	10	3080950	Hochdruckschlauch	1
	11	2440510	Zapfen	1
	12	391000	O-Ring-Dichtung	1
	13	2440540	Verbindungsstück	1
	14	2360320	Ring	1
	15	2440480	Bügel	1
	16	820510	O-Ring-Dichtung	1
	17	2360310	Verbindungsstück	1
	18	3080830	Hochdruckschlauch	1
	19	2360510	Schutzeinrichtung	1
	20	2360460	Scheibe	1
	21	2860220	Griff	1



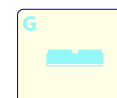
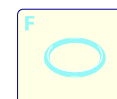
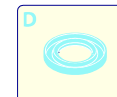
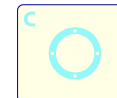
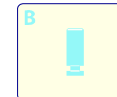
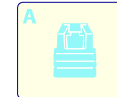
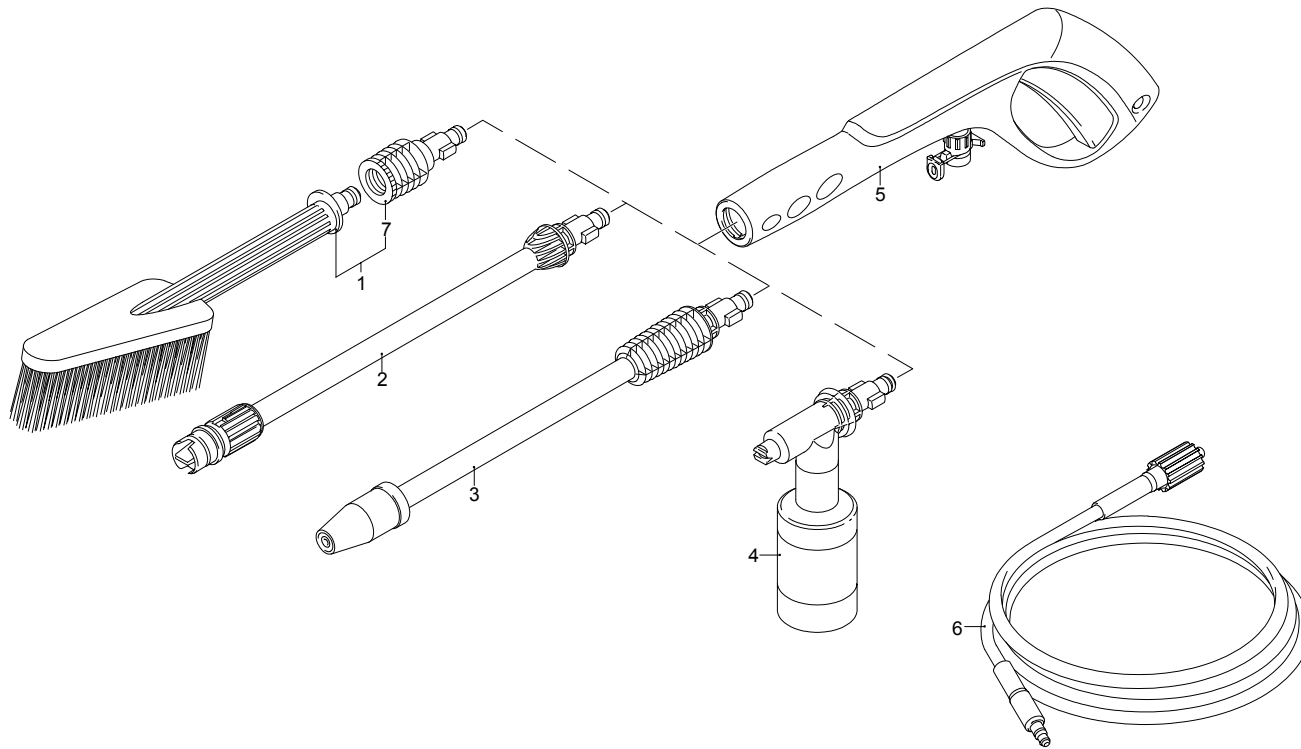
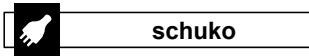
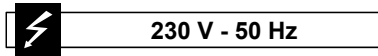
Modell PW 1700 WHR

Ausführung: PW 1700 WHR (08)

Seriennummer:

Code: 12622

01/02/2010



Gültigkeit	Pos.	Code	Bezeichnung	Menge
	1	40787	Fixe Bürste	1
	2	50970	Lanze+Düsenkopf	1
	3	50971	Lanze+Rotopower	1
	4	50954	Tank	1
	5	50991	Pistole	1
	6	50969	Hochdruckschlauch	1
	7	40788	Adapter	1

UN_CE_0215-AW