



ANNOVI REVERBERI S.p.A.
Via M.L. King,3 - 41100 Modena (Italy)
Tel. (+39) 059.414.411 - Telefax (+39) 059.253.505
E - Mail: industria@annovireverberi.it

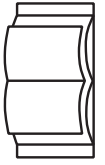
Pump type
Type de pompe
Pumpentyp
Tipo de bomba
Pompa tipo
XMA
SXMA
XMTA



TECHNICAL DATA / DONNEES TECHNIQUES / TECHNISCHE ANGABEN
CARACTERISTICAS TÉCNICAS / CARATTERISTICHE TECNICHE

PUMP TYPE TYPE DE POMPE PUMPENTYP TIPO DE BOMBA POMPA TIPO	OUTPUT DEBIT LEISTUNG CAUDAL PORTATA	PRESSURE PRESSION DRUCK PRESION PRESSIONE		POWER PUISSANCE LEISTUNG POTENCIA POTENZA		RPM TOURS/1' U.P.M. REVOLUCIONES/1' N° GIRI/1'	WEIGHT POIDS GEWICHT PESO PESO
		bar	psi	HP	kw		
XMA 2 G10	8	70	1000	1.5	1,1	1750	6,5
XMA 2 G15	8	105	1500	2	1,5	1750	6,5
XMA 2 G22	8	150	2200	3	2,2	1750	6,5
XMA 3 G25	11,4	170	2500	5	3,7	1750	6,5 - 7
XMA 3,5 G22	13,2	150	2200	5	3,7	1750	6,5 - 7
XMA 3,5 G25	13,2	170	2500	5,5	4	1750	6,5 - 7
XMA 4 G20	15,1	140	2000	5,5	4	1750	6,5 - 7
SXMA 3 G30	11,4	205	3000	5,5	4	1750	6,5
SXMA 3,5 G30	13,2	205	3000	7	5,2	1750	6,5
SXMA 4 G30	15,1	205	3000	7,5	5,5	1750	6,5 - 7
XMTA 3,5 G22	13,2	150	2200	5	3,7	1750	6,5

Cod. 99180 - MC



This manual must be read before beginning installation of the unit.
Ce livret doit être lu avant d'installer et d'employer le produit.
Das vorliegende Handbuch ist vor der Installation und dem Gebrauch des Produkts aufmerksam zu lesen.
Il presente libretto va letto prima di procedere all'installazione ed uso del prodotto.
Este manual debe ser leído antes de proceder a la instalación Y uso del producto.



ATTENTION:
ACHTUNG:
ATTENZIONE:
ATENCIÓN:

GB TORQUE WRENCH SETTINGS

The screws in position 38 are tightened to 15 Nm (1,5 kgm).
The valve nuts position 2 are tightened to 50 Nm (5,1 kgm).
Nuts position 25 must be tightened to 10 Nm (1 kgm).
The screws in position 17 are tightened to 10 Nm (1 kgm).

LUBRICATION

Before starting the pump, check the oil level in the pump. 0,4 kg of "SAE 30 W" is to be used. Change the oil after the first 50 working hours and then after every 500 working hours.

F COUPLE DE SERRAGE

Vis position 38 seront serrées à 15 Nm (1,5 kgm).
Bouchons de clapets position 2 seront serrées à 50 Nm (5,1 kgm).
L'écrou position 25 devra être fixe avec 10 Nm (1 kgm).
Vis position 17 seront serrées à 10 Nm (1 kgm).

LUBRIFICATION

Avant la mise en service de la pompe s'assurer que l'huile dans le carter soit à son juste niveau. L'huile à utiliser est "SAE 30 W" 0,4 kg. Changer l'huile après les premières 50 heures de fonctionnement et successivement toutes les 500 heures de travail.

D ANZUGSMOMENTE

Schrauben Pos. 38 mit 15 Nm (1,5 kgm) befestigen.
Ventildeckel Pos. 2 mit 50 Nm (5,1 kgm) befestigen.
Die Schraubmutter Pos. 25 muß mit einem Drehmomentdruck von 10 Nm (1kgm) befestigt werden.
Schrauben Pos. 17 mit 10 Nm (1 kgm) befestigen.

SCHMIERUNG

Vor der Inbetriebnahme der Pumpe Ölstand im Kurbelgehäuse überprüfen. Zur Ölfüllung 0,4 kg "SAE 30 W" verwenden. Ölwechsel nach den ersten 50 Betriebsstunden und dann alle 500 Betriebsstunden vornehmen.

E PARES DE TORSIÓN

Tornillos pos. 38: 15 Nm (1,5 kgm).
Tapón válvula pos. 2: 50 Nm (5,1 kgm).
La tuerca pos. 25 con 10 Nm (1 kgm).
Tornillos pos. 17: 10 Nm (1 kgm).

LUBRICACION

Antes de poner en funcionamiento la bomba asegurarse que el nivel de aceite en el carter sea justo. El aceite que debe utilizarse es "SAE 30 W" en la cantidad de 0,4 kg. Cambiar el aceite después de las primeras 50 horas de funcionamiento y sucesivamente cada 500 horas de trabajo.

I COPPIE DI SERRAGGIO

Viti pos. 38 vanno serrate con 15 Nm (1,5 kgm).
Tappi valvole pos. 2 vanno serrate con 50 Nm (5,1 kgm).
Dadi pos. 25 vanno serrati con 10 Nm (1 kgm).
Viti pos. 17 vanno serrate con 10 Nm (1 kgm).

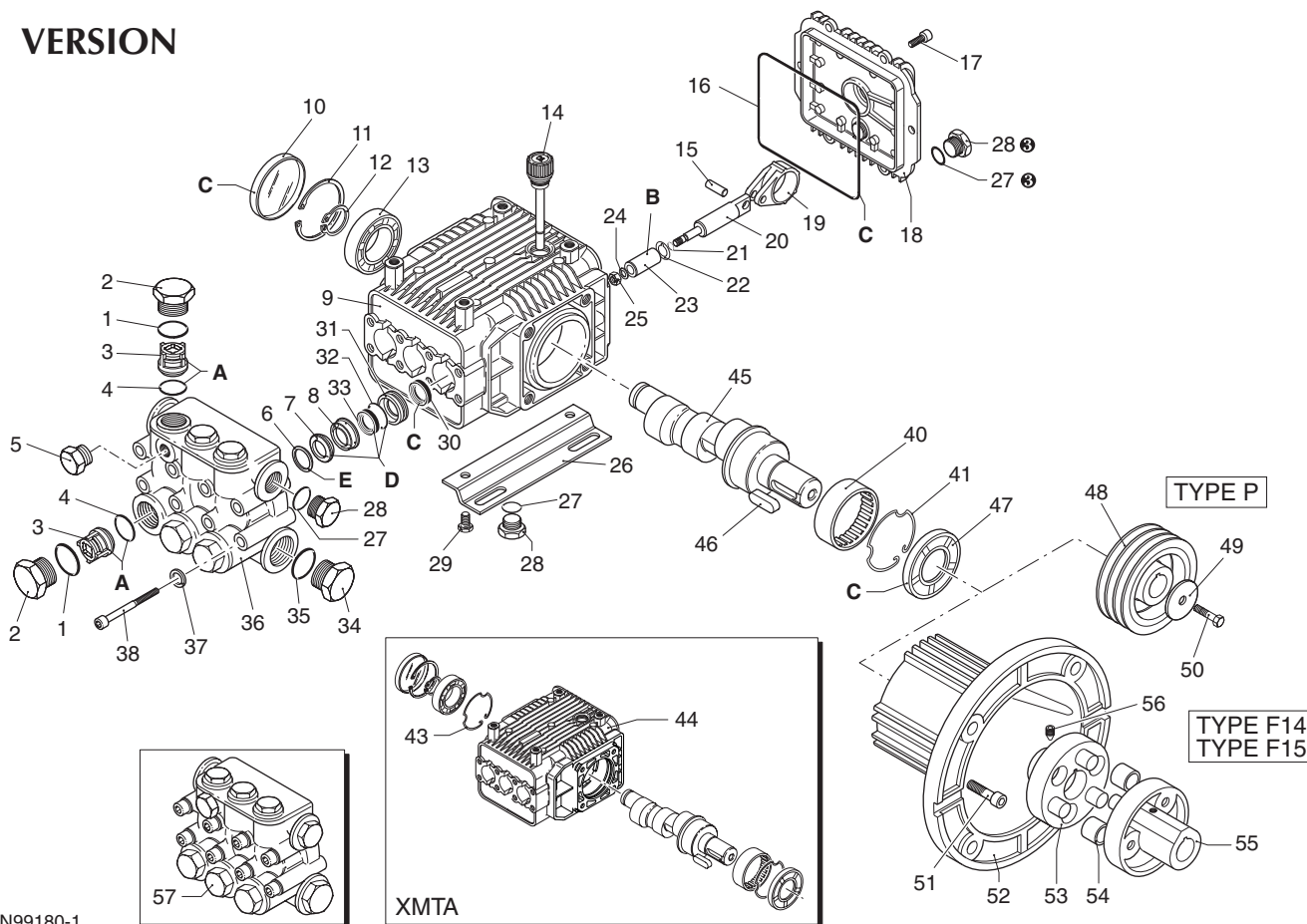
LUBRIFICAZIONE

Prima dell'avviamento della pompa assicurarsi che l'olio nel carter sia al giusto livello. L'olio da usare è "SAE 30 W" nella quantità di 0,4 kg. Sostituire l'olio dopo le prime 50 ore di funzionamento e successivamente ogni 500 ore di lavoro.

XMA - SXMA - XMTA 1750 RPM



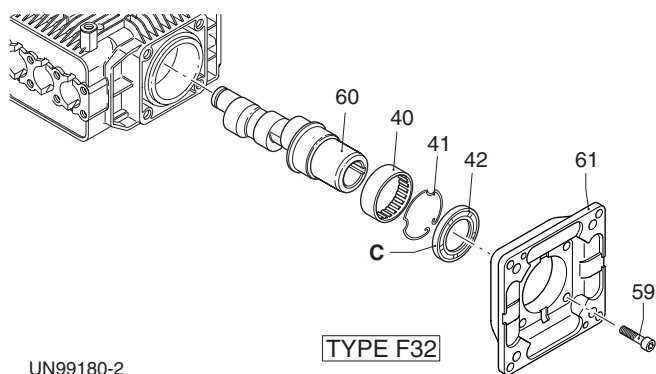
N VERSION



UN99180-1

XMTA

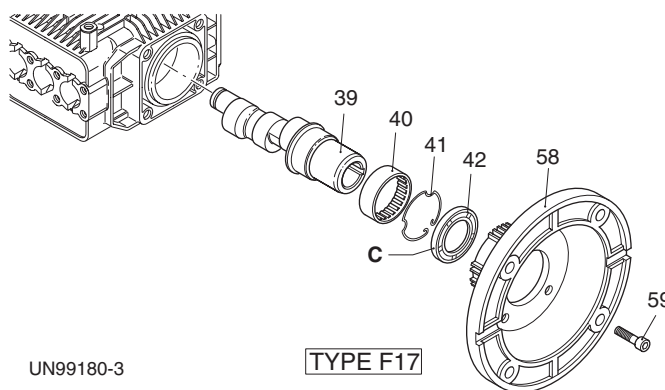
E VERSION $\varnothing 5/8''$



UN99180-2

TYPE F32

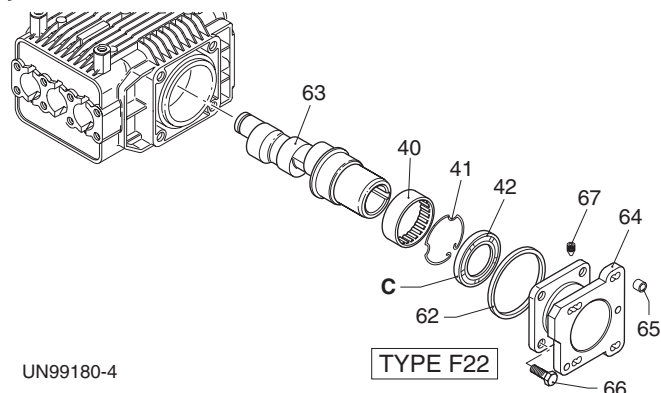
E VERSION $\varnothing 1''/8$



UN99180-3

TYPE F17

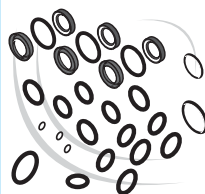
J VERSION



UN99180-4

TYPE F22

PARTI SPECIALI IN VITON SPECIAL PARTS



Cod. Part n°	Denominazione Description	Q.tà Q.ty
2776	Tenute acqua/Water seals $\varnothing 15$	1
2777	Tenute acqua/Water seals $\varnothing 18$	1

XMA - SXMA - XMTA 1750 RPM



Pos.	Cod. Part n°	Denominazione	Description	Q.tà Q.ty	Note Vedi / See	Pos.	Cod. Part n°	Denominazione	Description	Q.tà Q.ty	Note Vedi / See
1	960160	OR Ø 17,86x2,62	O-Ring	6		37	1381550	Rondella	Washer	8	
2	1260162	Tappo valvola	Plug	6		38	1322730	Vite TCEI M 6x60	Screw	8	
3	1269050	Valvola completa	Complete valve	6		39	1780300	Albero ecc. cavo	Hollow shaft	1	○
4	880830	OR Ø 15,54x2,62	O-Ring	6			1780290	Albero ecc. cavo	Hollow shaft	1	▲
5	620301	Tappo 1/8" G conico	Plug	1			1780950	Albero ecc. cavo	Hollow shaft	1	●
6	1780130	Anello appoggio	Support ring	3	Ø 15 ○ ▲	40	1321190	Cuscinetto	Bearing	1	
7	1780140	Anello appoggio	Support ring	3	Ø 18 ●	41	1321080	Anello elastico	Snap ring	1	
8	1260130	Guarnizione	Gasket	3	Ø 15 ○ ▲	42	480671	Anello tenuta	Seal	1	
	1260220	Guarnizione	Gasket	3	Ø 18 ●	43	1321080	Anello elastico	Snap ring	1	XMTA
	1780090	Guida pistone	Piston guide	3	Ø 15 ○ ▲	44	1781290	Corpo pompa	Pump body	1	XMTA
	1780110	Guida pistone	Piston guide	3	Ø 18 ●	45	1780170	Albero eccentrico	Crank shaft	1	○
9	1780010	Corpo pompa	Pump body	1			1780150	Albero eccentrico	Crank shaft	1	▲
10	1266740	Cappellotto chiusura	Cap	1			1780180	Albero eccentrico	Crank shaft	1	●
11	1260790	Anello seeger Øi 52	Circlip	1		46	1380520	Linguetta	Key	1	
12	1780550	Anello elastico	Snap ring	1		47	1260750	Anello tenuta	Seal	1	
13	1780490	Cuscinetto	Bearing	1		48	1320270	Puleggia	Pulley	1	2A De 120mm
14	880130	Tappo olio	Oil cap	1			1380890	Puleggia	Pulley	1	3A De 120mm
15	1780050	Spinotto	Piston pin	3			1380900	Puleggia	Pulley	1	4A De 138mm
16	1780510	OR Ø 106x3	O-Ring	1		49	780230	Rosetta	Washer	1	
17	1200430	Vite TCEI M 6x16	Screw	6		50	740450	Vite TE M 6x18	Screw	1	
18	1789010	Coperchio completo	Complete cover	1		51	180030	Vite TCEI M 8x20	Screw	4	
19	1780040	Biella Alluminio	Alluminium con rod	3	XMA - XMTA	52	1380490	Flangia motori	El. motor flange	1	
	1780710	Biella Bronzo	Bronze con rod	3	SXMA	53	1380300	Semigiunto pompa	Pump coupling	1	
20	1780060	Pistone di guida	Guiding piston	3		54	1321670	Boccola	Bushing	6	
21	480480	OR Ø 4,48x1,78	O-Ring	3		55	1380330	Semigiunto motore	Motor coupling	1	F 14
22	1260091	Disco separatore	Spacer disc	3			1380350	Semigiunto motore	Motor coupling	1	F 15
23	1780070	Pistone	Piston	3	Ø 15 ○ ▲	56	1380180	Grano M 6x10	Grub screw	1	
	1780080	Pistone	Piston	3	Ø 18 ●	57	1789201	Prem. testa pompa	Pump head pre-ass.	1	○ ▲
24	1260100	Rondella pistone	Piston washer	3			1789202	Prem. testa pompa	Pump head pre-ass.	1	●
25	1260110	Dado M 8	Nut	3		58	1380360	Flangia motore	Motor flange	1	
26	1380141	Piede	Base	2	Optional	59	180030	Vite TCEI M 8x20	Screw	4	
27	740290	OR Ø 14x1,78	O-Ring	3	③	60	1781050	Albero ecc. cavo	Hollow shaft	1	○
28	1980740	Tappo 3/8"G Ottone	3/8"G plug	3	③	61	1780830	Flangia motore	Motor flange	1	
29	1260470	Vite TE M 8x10	Screw	4	Optional	62	1780430	Centraggio	Bushing	1	
30	1260460	Anello tenuta	Seal	3		63	1780360	Albero ecc. cavo	Hollow shaft	1	○
31	1780100	Guida pistone post.	Rear piston guide	3	Ø 15 ○ ▲		1780350	Albero ecc. cavo	Hollow shaft	1	▲
	1780120	Guida pistone post.	Rear piston guide	3	Ø 18 ●		1780960	Albero ecc. cavo	Hollow shaft	1	●
32	770260	OR Ø 23,52x1,78	O-Ring	3		64	1380311	Flangia mot.scoppio	Gas engine flange	1	
33	1260440	Guarnizione	Gasket	3	Ø 15 ○ ▲	65	1380670	Distanziale	Spacer	4	②
	1260450	Guarnizione	Gasket	3	Ø 18 ●	66	180432	Vite TE M 8x20	Screw	4	
34	820361	Tappo 1/2" G	Plug	1	Ottone/Brass	② Per motori HONDA / HONDA engines only					
35	180101	OR Ø 17,5x2	O-Ring	1		③ Compreso nel cod. 1789010 / Part of part n° 1789010					
36	1780020	Testa	Head	1							

KIT RICAMBI - PART KITS

A=KIT 1864 valvole valves		B=KIT 2739 Ø 15 pistoni - pistons		C=KIT 2786 (N) tenute olio oil seals		C=KIT 2787 (E-I) tenute olio oil seals	
pos.	Q.ty	pos.	Q.ty	pos.	Q.ty	pos.	Q.ty
3	6	10	1	10	1	10	1
4	6	16	1	16	1	16	1
		23	3	30	3	30	3
				47	1	42	1

D=KIT 2741 Ø 15 tenute acqua water seals		D=KIT 2747 Ø 18 tenute acqua water seals		E=KIT 2740 Ø 15 anelli appoggio support rings		E=KIT 2745 Ø 18 anelli appoggio support rings	
pos.	Q.ty	pos.	Q.ty	pos.	Q.ty	pos.	Q.ty
7	3	7	3	6	3	6	3
32	3	32	3				
33	3	33	3				

LEGENDA :

Ø 15 N VERSION	Ø 18 N VERSION	Ø 15 J VERSION	Ø 18 J VERSION
○ Per / For XMA 3 G25 SXMA 3 G30	● Per / For XMA 4 G20 SXMA 4 G30	○ Per / For XMA 3 G25	● Per / For XMA 4 G20 SXMA 4 G30
▲ Per / For XMA 3.5 G22 XMTA 3.5 G22 XMA 3.5 G25 SXMA 3.5 G30		▲ Per / For XMA 3.5 G22 XMA 3.5 G25	

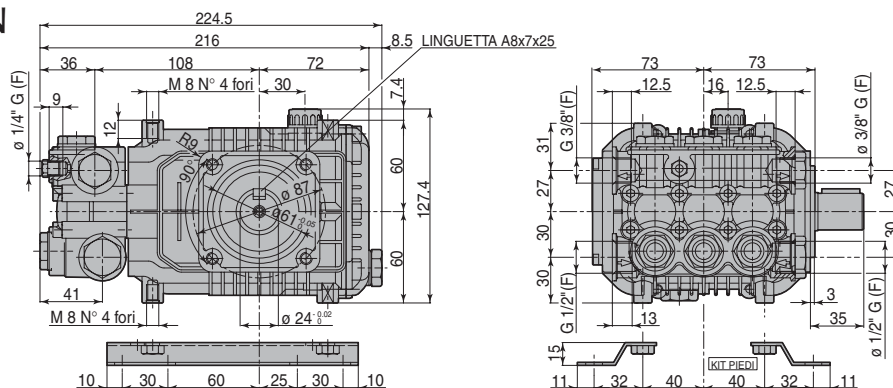
Ø 15 E VERSION (Ø 5/8")	Ø 15 E VERSION (Ø 1" 1/8)	Ø 18 E VERSION (Ø 1" 1/8)
○ Per / For XMA 2 G10 XMA 2 G15 XMA 2 G22	○ Per / For XMA 3 G25	● Per / For XMA 4 G20
	▲ Per / For XMA 3.5 G22 XMA 3.5 G25	

XMA - SXMA - XMTA 1750 RPM

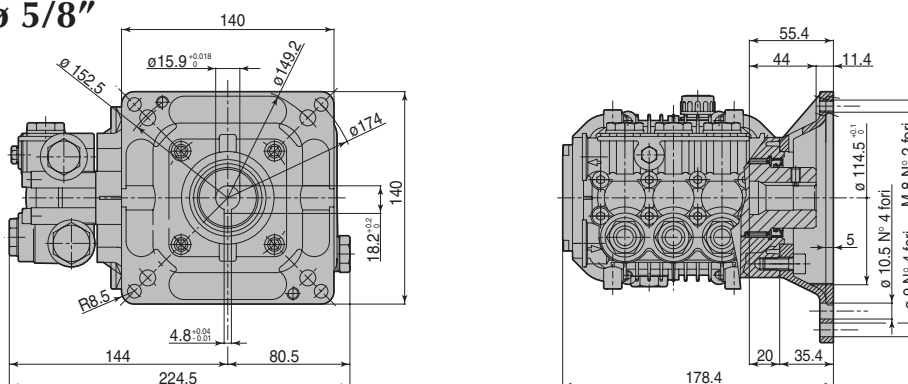


DIMENSIONS / ABMESSUNGEN / DIMENSIONES / DIMENSIONI

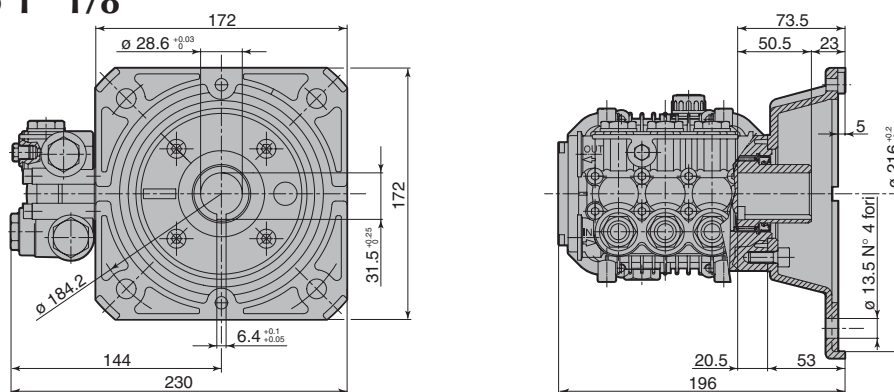
N VERSION



E VERSION $\phi 5/8''$



E VERSION $\phi 1'' 1/8$



J VERSION

