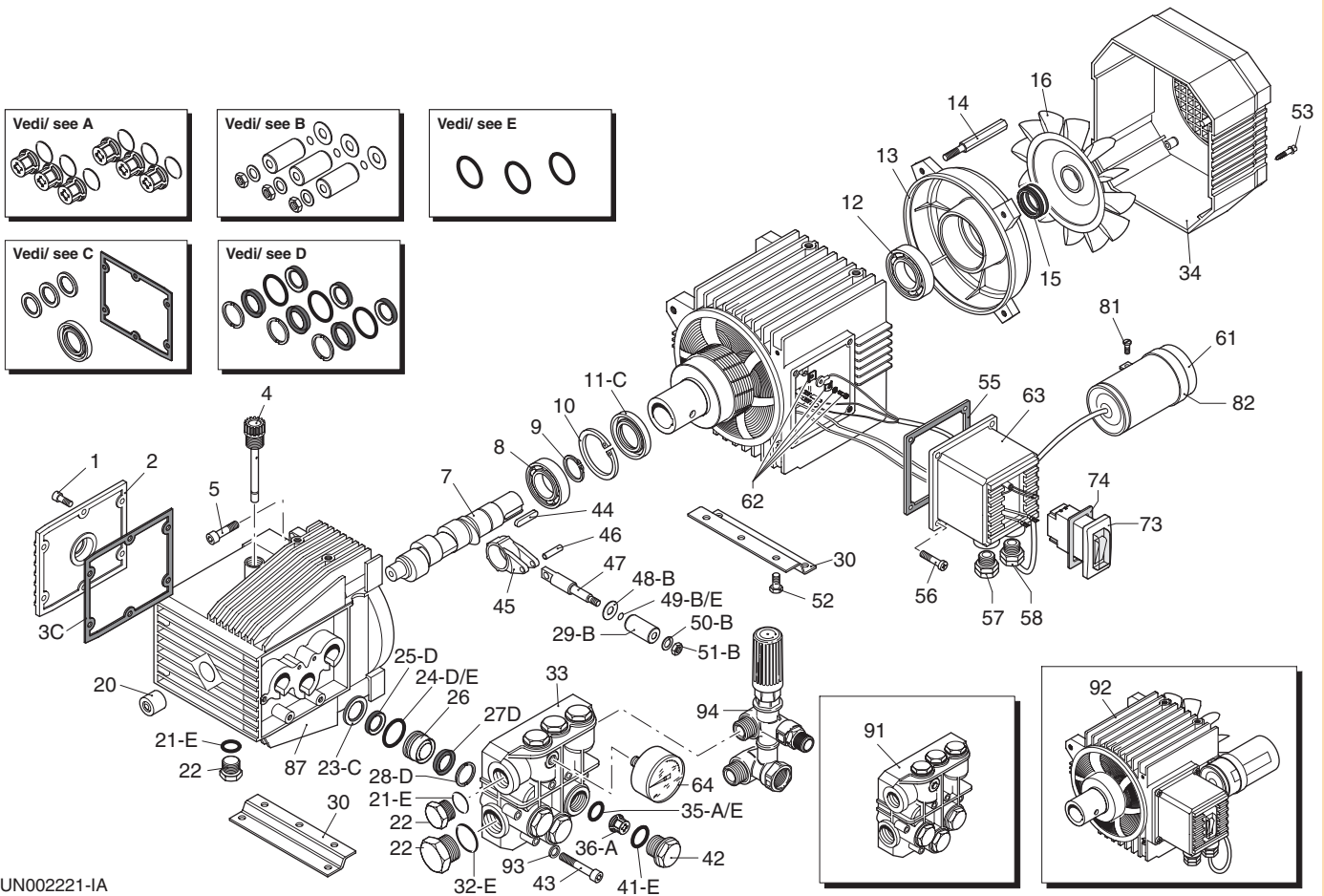
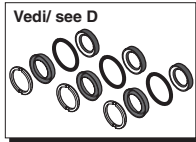
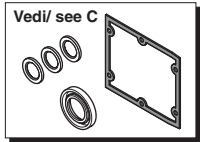
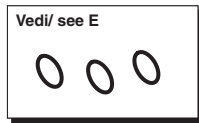
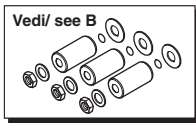
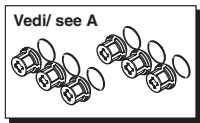


HPE-M

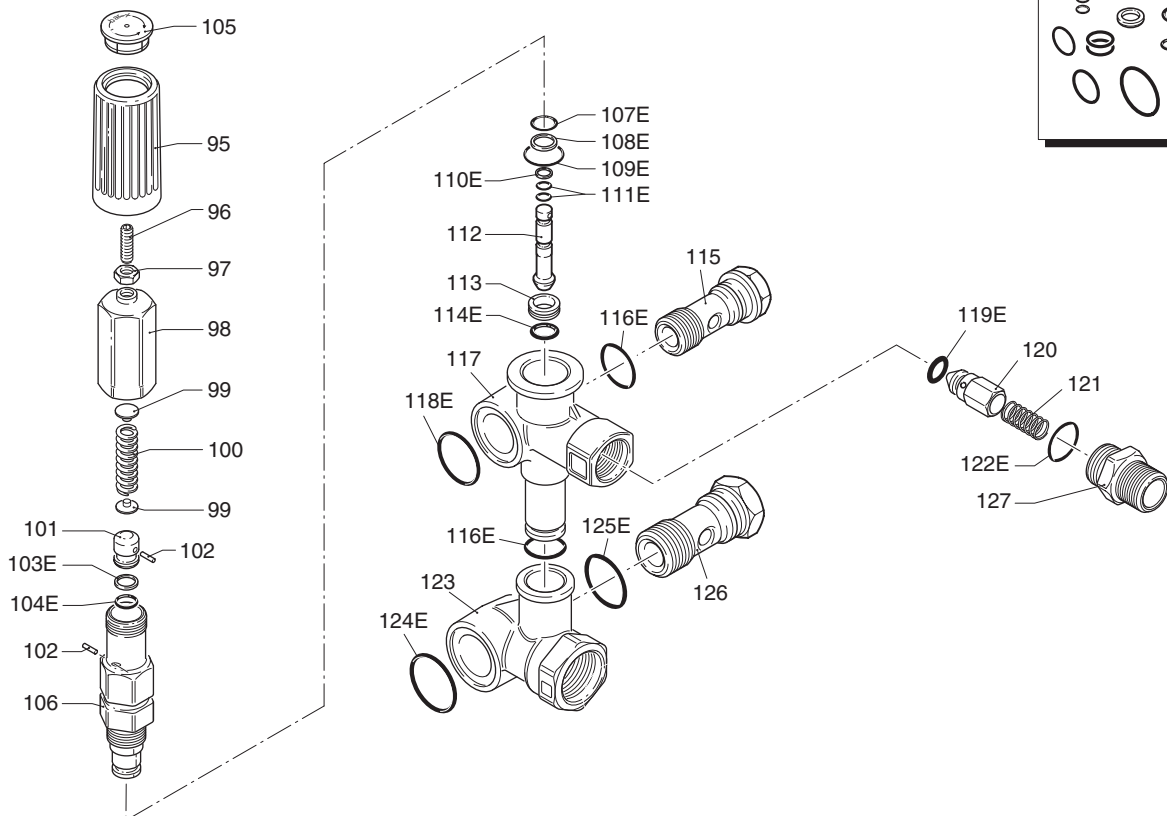
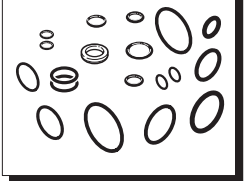
1450_{rpm}



UN002221-IA

MINIMATIC 4/B

E= 2812



UN002222-IA

HPE-M

MODELLO - MODEL:

02.08 04.08 08.08



Pos.	Cod. Part n°	Denominazione	Description	Q.tà Q.ty	Note Vedi / See	Pos.	Cod. Part n°	Denominazione	Description	Q.tà Q.ty	Note Vedi / See
1	1260760	Vite TCEI M 5x20	Screw	6		61	1263520	Condensatore 40µF	Capacitor 40µF	1	
2	1269101	Coperchio completo	Complete cover	1		62	1269100	Morsetto di terra	Earh terminal	1	
3	1260040	Guarnizione	Gasket	1		63	1261710	Scatola morsettiera	Terminal box	1	
4	1260480	Tappo carico olio	Oil cap	1		64	3223	Manometro	Pressure gauge	1	
5	1260780	Vite TCEI M 5x25	Screw	4		73	1262180	Interr. luminoso 12 A	Luminous switch 12 A	1	
7	1323100	Albero eccentrico	Crankshaft	1	○	74	1265080	Guarnizione interr.	Gasket	1	
	1323110	Albero eccentrico	Crankshaft	1	●	81	1260810	Vite TCTC M 4x10	Screw	1	
	1260200	Albero eccentrico	Crankshaft	1	■	82	1340280	Fascetta	Clamp	1	
8	180400	Cuscinetto	Bearing	1		86	1260050	Boccola	Bushing	1	
9	1260770	Anello seeger	Circlip	1		87	1260010	Corpo pompa	Pump housing	1	
10	1260790	Anello seeger Øi 52	Circlip	1		91	1269317	Prem. testa pompa	Pump head pre-ass.	1	
11	1260750	Anello tenuta	Seal	1		92	44060	Mot. elettrico	Electric motor	1	
12	1260950	Cuscinetto	Bearing	1		93	1381550	Rondella	Washer	6	
13	1260960	Scudo motore	Motor shield	1		94	20821	Valvola Minimatic 4/B	Minimatic 4/B valve	1	
14	1260360	Colonna	Stud bold	4		95	1981780	Manopola	Knob	1	
15	1260970	Anello tenuta v.ring	V-ring seal	1		96	1540560	Grano M 6x20	Grub screw	1	
16	1260300	Ventola	Fan	1		97	1980300	Dado M 6	Nut	1	
21	740290	OR Ø 14x1,78	O-Ring	2		98	1980390	Inserto manopola	Knob insert	1	
22	1980740	Tappo 3/8"G	Plug	3	Ottone/Brass	99	1980220	Piattello molla	Spring plate	2	
23	1260460	Anello tenuta	Seal	3		100	1271070	Molla	Spring	1	
24	1260420	OR Ø 26,70x1,78	O-Ring	3		101	1080041	Pistone superiore	Upper piston	1	
25	1260440	Guarnizione	Gasket	3		102	1080070	Spina	Pin	2	
26	1260151	Guida pistone	Piston guide	3		103	1080401	Anello antiestrusione	Back-up ring	1	
27	1271650	Guarnizione	Gasket	3		104	1080250	OR ø 7,66x1,78	O-Ring	1	
28	1520120	Anello appoggio	Support ring	3		105	1981770	Tappo manopola	Knob plug	1	
29	1260120	Pistone	Piston	3		106	1980210	Guida pistone	Piston guide	1	
30	1260830	Piede	Base	2		107	740290	OR ø 14x1,78	O-Ring	1	
31	820361	Tappo 1/2"G	Plug	1		108	800560	OR ø 8,73x1,78	O-Ring	1	
32	180101	OR Ø 17,5x2	O-Ring	1		109	880830	OR ø 15,54x2,62	O-Ring	1	
33	1320022	Testa pompa	Pump head	1		110	1271170	Anello antiestrusione	Back-up ring	1	
34	1261760	Copriventola	Fan housing	1		111	1080190	OR ø 2,90x1,78	O-Ring	2	
35	880830	OR Ø 15,54x2,62	O-Ring	6		112	1272110	Pistone inferiore	Lower piston	1	
36	1269050	Valvola completa	Complete valve	6		113	1980200	Sede valvola	Valve seat	1	
41	960160	OR Ø 17,86x2,62	O-Ring	6		114	1470210	OR ø 9x1	O-Ring	1	
42	1260162	Tappo	Plug	6		115	1540270	Vite 3/8"G	Screw	1	Ottone/Brass
43	680570	Vite TCEI M 6x60	Screw	6		116	390080	OR ø 11,91x2,62	O-Ring	2	
44	1380520	Linguetta	Key	1		117	1540510	Corpo valvola	Valve housing	1	
45	1260060	Biella Alluminio	Aluminium Con rod	3		118	1140450	OR ø 20,24x2,62	O-Ring	1	
46	1260080	Spinotto	Piston pin	3		119	1460430	OR ø 4x2,5	O-Ring	1	
47	1260070	Pistone di guida	Piston rod	3		120	1540170	Otturatore	Jet	1	
48	1260091	Disco separatore	Spacer	3		121	1080091	Molla sfera	Ball spring	1	
49	480480	OR Ø 4,48x1,78	O-Ring	3		122	394280	OR ø 12,42x1,78	O-Ring	1	
50	1260100	Rondella	Washer	3		123	1540280	Corpo by-pass 1/2"G	By-pass housing	1	
51	1260110	Dado	Nut	3		124	1540630	OR ø 23,47x2,62	O-Ring	1	
52	1260470	Vite TE M 8x10	Screw	4		125	880270	OR ø 17,17x1,78	O-Ring	1	
53	1261551	Vite autof.ab 3,9x13	Screw	4		126	2260420	Vite 1/2"G	Screw	1	
54	1261720	Morsettiera	6 stud terminal block	1		127	1540180	Raccordo	Fitting	1	
55	1260400	Guarnizione	Gasket	1							
56	1261560	Vite autof. 3,9x16	Screw	4							
57	1271950	Fermacavo	Cable retainer	1							
58	1269090	Fermacavo	Cable retainer	1							

KIT RICAMBI - PART KITS

A=KIT 1880 valvole valves		B=KIT 2623 pistoni pistons		C=KIT 1876 tenute olio oil seals		D=KIT 2624 tenute acqua water seals	
Pos.	Q.ty	Pos.	Q.ty	Pos.	Q.ty	Pos.	Q.ty
35	6	29	3	3	1	24	3
36	6	48	3	11	1	25	3
		49	3	23	3	27	3
		50	3			28	3
		51	3				

E=KIT 2767 OR O-rings		E=KIT 2812 OR O-rings					
Pos.	Q.ty	Pos.	Q.ty	Pos.	Q.ty	Pos.	Q.ty
21	2	103	1	111	2	124	1
24	3	104	1	114	1	125	1
32	1	107	1	116	2		
35	1	108	1	118	1		
41	1	109	1	119	1		
49	1	110	1	122	1		

SIMBOLOGIA - SYMBOLS

○ Per / For HPE-M 02.08 ● Per / For HPE-M 04.08 ■ Per / For HPE-M 08.08