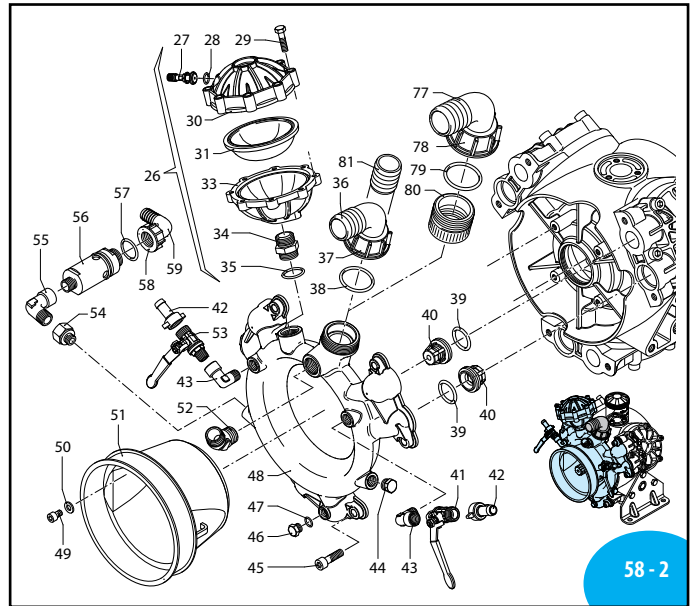


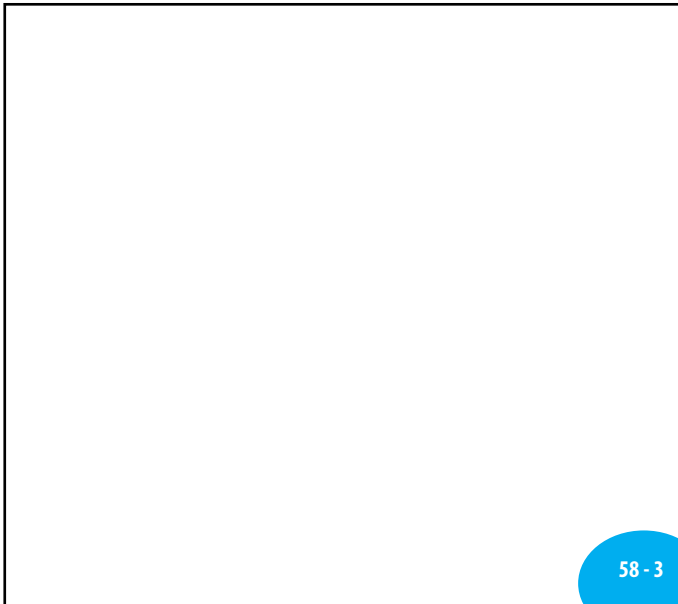
58 - 1

UN000683-DD

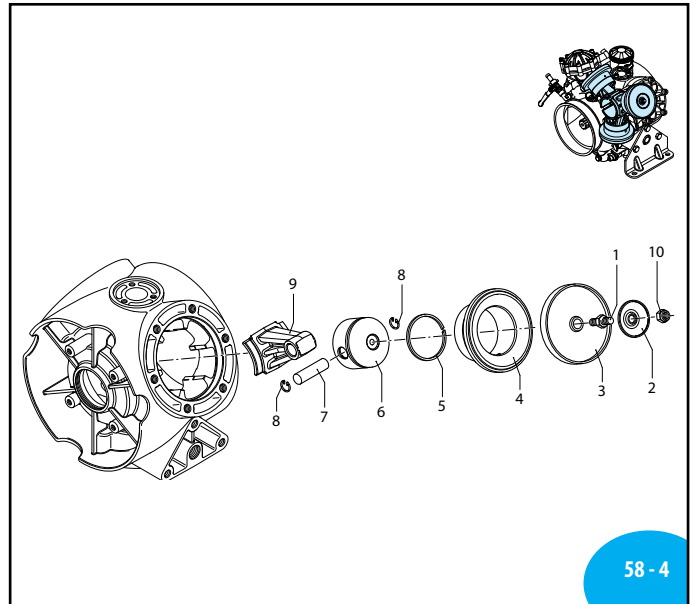


58 - 2

UN000684-LC

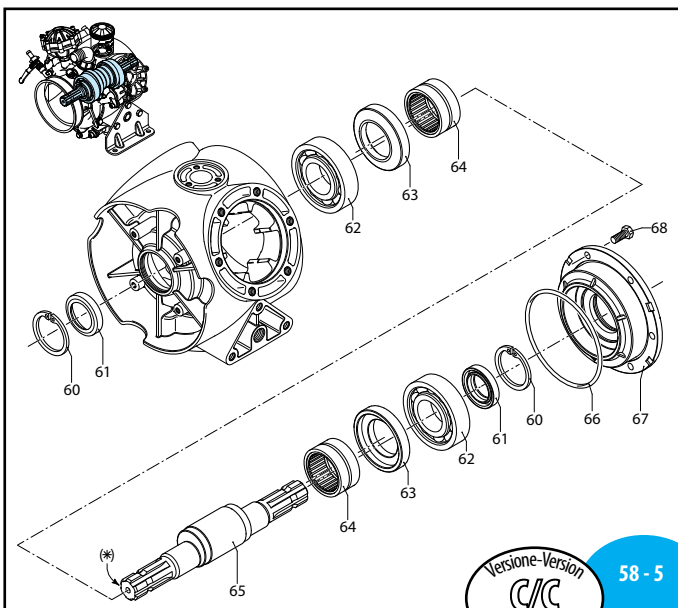


58 - 3



58 - 4

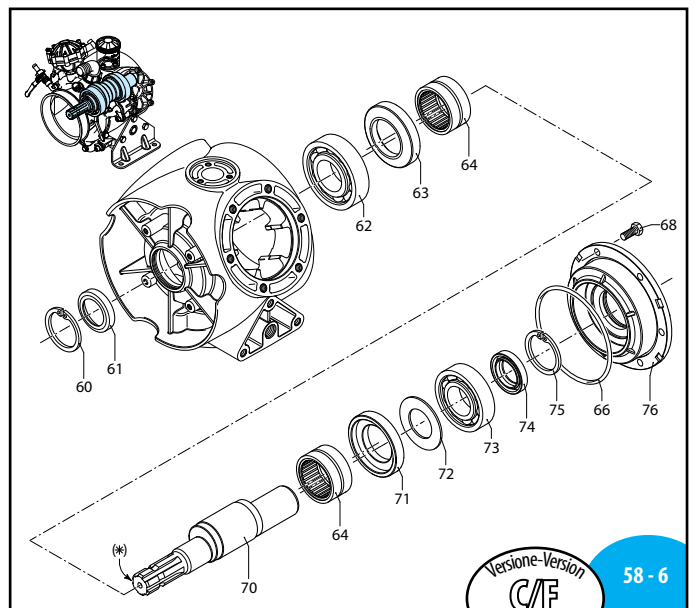
UN000685-DD



58 - 5

Versione-Version
C/C

UN000686-DD



58 - 6

Versione-Version
C/F

UN000687-DD

BHP 130 - BHP 150

Pos.	Cod.	Descrizione	Description	Q.ty	Note
1	2240100	Perno membrana	Diaphragm pin	3	■ C ₃₀
2	580090	Piastra di richiamo	Plate	3	
3	2240080	Membrana	Diaphragm	3	Gomma
4	2240085	Membrana	Diaphragm	3	Desmopan
5	2240560	Camicia	Sleeve	3	BHP 130
6	2240520	Camicia	Sleeve	3	BHP 150
7	2240570	Segmento	Piston ring	3	BHP 130
8	2240360	Segmento	Piston ring	3	BHP 150
9	2240550	Pistone	Piston	3	BHP 130
10	2240350	Pistone	Piston	3	BHP 150
11	2240580	Spinotto	Piston pin	3	BHP 130
12	540070	Spinotto	Piston pin	3	BHP 150
13	160691	Anellino spinotto	Pin ring	6	
14	2240090	Biella	Connecting rod	3	
15	2240110	Dado M 10	Nut	3	C ₃₀
16	1800060	Tappo serbatoio nero	Black oil tank cap	1	BHP 130
17	750050	Tappo serbatoio rosso	Red oil tank cap	1	BHP 150
18	1040060	OR ø 72,69x2,62	O-Ring	1	▶
19	540290	Vite TCEI M 8x25	Bolt	3	C ₁₀
20	2240070	Serbatoio olio	Oil tank	1	☒
21	2240270	OR ø 67,95x2,62	O-Ring	1	
22	2240011	Corpo pompa	Pump body	1	
23	2240454	Testa DX	Right head	2	
24	2240470	Vite TE M 12x70	Bolt	18	C ₅₀
25	180101	OR ø 17,5x2	O-Ring	2	▶
26	2240190	Piede	Base	2	
27	540100	Vite TE M 12x40	Bolt	6	☉ C ₅₀
28	820361	Tappo 1/2" G	Cap	2	Ottone C ₂₀
29	2240455	Testa SX	Left head	1	
30	1517	Camera aria completa	Complete air chamber	1	
31	180020	Valvola di gonfiaggio	Air valve	1	C ₄
32	650542	Guarnizione	Gasket	1	▶
33	380410	Vite TE M 8x40	Bolt	8	C ₂₀
34	620231	Semisfera superiore	Upper air chamber	1	
35	550190	Semicamera aria	Semi air chamber	1	
36	2240482	Semicamera inferiore	Lower air chamber	1	
37	2240490	Niples camera aria	Threaded adapter	1	
38	720030	OR ø 22,22x2,62	O-Ring	1	▶
39	540550	Curva ø 40	Elbow	1	
40	540540	Girello 1"3/4 G	Ring nut	1	
41	250310	OR ø 36,14x2,62	O-Ring	1	▶
42	680070	OR ø 31,5x4,25	O-Ring	6	☒
43	759051	Valvola completa	Complete valve	6	
44	130491	Rub. 3/8"-1/2" G (M) DX	Right valve	1	ex 30491 ☉
45	110130	Racc. 1/2" G+hose ø13	Fitting 1/2" G+hose ø13	2	ex 10130
46	900210	Curva rubinetto	Valve elbow	2	
47	880530	Tappo 3/8" G	Plug	1	C ₂₀
48	650330	Vite TCEI M 10x35	Bolt	6	C ₄₀

Pos.	Cod.	Descrizione	Description	Q.ty	Note
46	880581	Tappo 1/4" G	Plug	1	C ₄₀
47	820510	OR ø 10,82x1,78	O-Ring	1	▶
48	2240462	Cond. aspirazione/mandata	Manifold	1	
49	850250	Vite TCEI M 8x12	Bolt	4	C ₁₀
50	390311	Rosetta ø 8,5	Washer	4	
51	1500470	Protezione cardano	Cardan protection	1	
52	851650	Curva di mandata	Outlet elbow	1	☉
53	130492	Rub. 3/8"-1/2" G (M) SX	Left valve	1	ex 30492 ☉
54	881461	Manic. 3/8"-1/2" G (M)-(F)	Threaded adapter	1	☒
55	881560	Gomito 90° 1/2" G (M)-(F)	Elbow	1	☒
56	1609002	Valvola di sicurezza	Safety valve	1	■
57	880831	OR ø 15,54x2,62	O-Ring	1	▶
58	550450	Girello 3/4" G	Ring nut	1	
59	550460	Curva ø 18	Elbow	1	
60	2240160	Anello seeger	Circlip	2	
61	2240150	Anello tenuta	Seal ring	2	
62	2240430	Cuscinetto	Bearing	2	☒
63	2240121	Anello biella	Con rod ring	2	
64	850320	Cuscinetto a rullini	Roller bearing	2	
65	2240173	Albero eccentrico "C/C"	"C/C" shaft	1	(BE)
66	2240290	OR ø 152,7x2,62	O-Ring	1	▶
67	2240020	Flangia supp. cuscinetto	Flange	1	
68	160670	Vite TE M 10x25	Bolt	6	☉ C ₄₀
69	2240620	Albero eccentrico "C/F"	"C/F" shaft	1	ø 32 (DH)
70	2240410	Albero eccentrico "C/F"	"C/F" shaft	1	ø 1" 3/8 (BG)
71	2240390	Anello biella	Con rod ring	1	
72	2240400	Anello	Ring	1	
73	2240440	Cuscinetto	Bearing	1	☒
74	1800090	Anello tenuta	Seal ring	1	
75	620330	Anello seeger	Circlip	1	
76	2240610	Flangia supp. cuscinetto	Flange	1	ø 32
77	2240370	Flangia supp. cuscinetto	Flange	1	ø 1" 3/8
78	760020	Curva ø 50	Elbow	1	Optional
79	760040	Girello 2" G	Ring nut	1	Optional
80	620210	OR ø 40,95x2,62	O-Ring	1	Optional
81	2380080	Niples 2"-1"3/4 G (M)-(F)	Threaded adapter	1	Optional
	392190	Portagomma ø 40	Hose tail	1	Optional

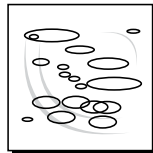
Alta Pressione
High Pressure



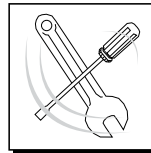
KIT 2444 Membrane gomma Buna diaphragms	
Pos.	Q.ty
3	3



KIT 2445 Valvole Valves	
Pos.	Q.ty
39	6
40	6



KIT 2446 OR O-Rings	
Pos.	Q.ty
12	1
16	1
21	2
35	1
38	1
39	6
47	1
57	1
66	1



KIT 2447 Pronto intervento Maintenance repair					
Pos.	Q.ty	Pos.	Q.ty	Pos.	Q.ty
1	2	39	6		
2	2	40	6		
3	3	61	2		
10	2	66	1		
12	1	74	1		
15	1				
16	1				
21	2				
35	1				
38	1				



Olio utilizzato Used oil	
Tipo - Type	Kg
SAE 30	2,4