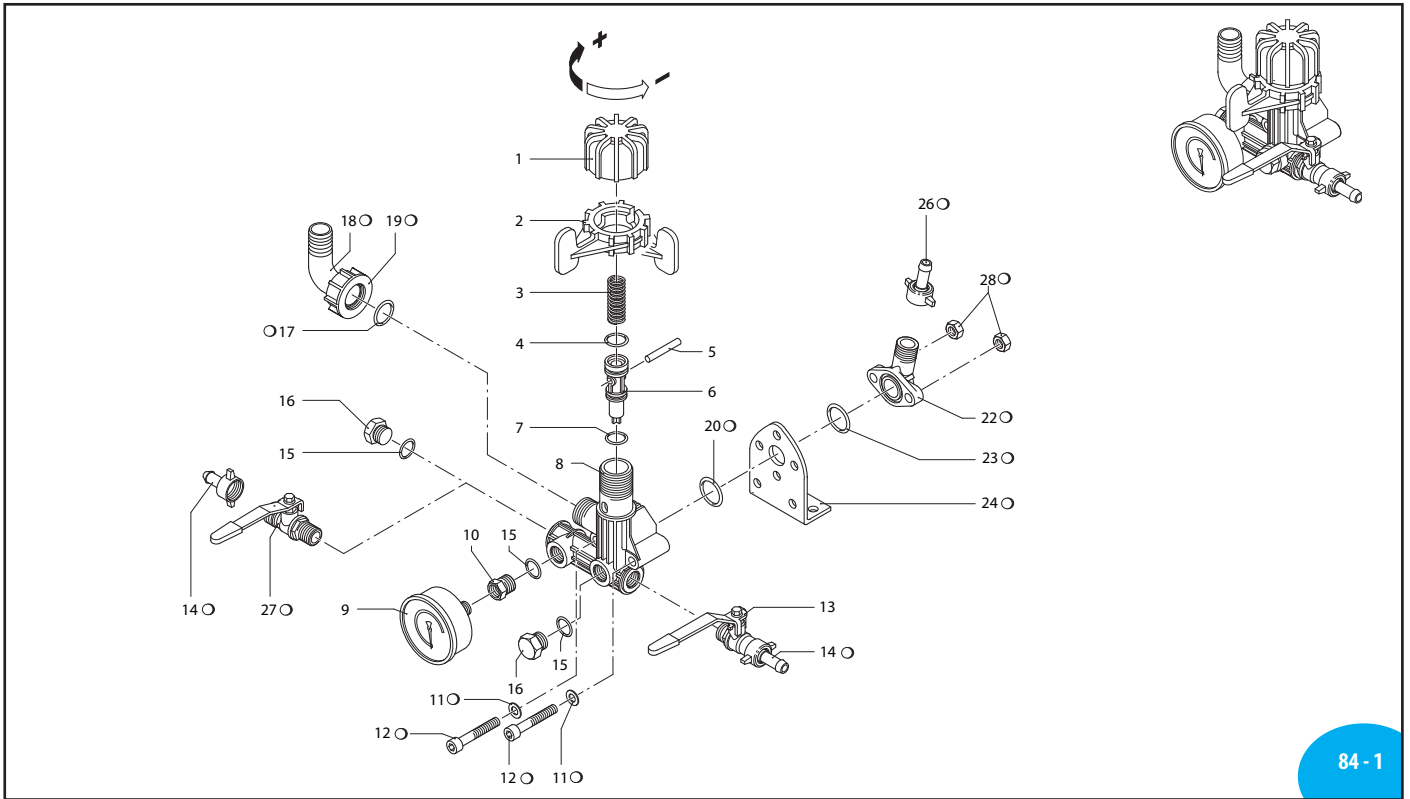


ANNOVIREVERBERI

GR 30



84 - 1

SL000117-JY

Pos.	Cod.	Descrizione	Description	Q.ty	Note
1	1880220	Manopola	Adjustment knob	1	
2	1880210	Ghiera sgancio press.	Ring nut	1	
3	1880331	Molla	Spring	1	
4	480440	OR ø 17,13x2,62	O-Ring	1	▶
5	1880240	Spinotto	Pin	1	
6	1889201	Otturatore	Jet	1	
7	1880260	OR ø 15,08x2,62	O-Ring	1	▶
8	1880200	Corpo valvola	Valve body	1	
9	1880340	Manometro	Pressure gauge	1	⊕
10	1880250	Riduzione manometro	Pipe reducer	1	⊕
11	550331	Rosetta øi 6,5	Washer	2	
12	801080	Vite TCEI M 6x50	Bolt	2	⊕ _{9,81}
13	130491	Rub. 3/8"-1/2"G (M) DX	Right valve	1	ex 30491 ⊕
14	110131	Racc. 1/2"G+tub. ø10	Fitting 1/2"G+hose ø10	3	ex 10131
15	740290	OR ø 14x1,78	O-Ring	3	▶
16	130171	Tappo 3/8"G	Plug	2	⊕ _{19,62}
17	880830	OR ø 15,54x2,62	O-Ring	1	▶
18	550460	Curva ø18	Elbow	1	
19	550450	Girello 3/4"G	Ring nut	1	
20	1140450	OR ø 20,24x2,62	O-Ring	1	▶
22	450145	Flangia raccordo	Flange	1	
23	550350	OR ø 23,81x2,62	O-Ring	1	▶
24	320406	Staffa GS	Bracket	1	
26	110130	Racc. 1/2"G+tub. ø13	Fitting 1/2"G+hose ø13	1	ex 10130
27	130492	Rub. 3/8"-1/2"G (M) SX	Left valve	1	ex 30492 ⊕
28	390311	Rosetta 8,5x17x1,5	Washer	2	

⊕ Non compreso nel GR 30 - No part of GR 30

Kit per/for GR 30	
<p>KIT 891 "I"</p> <p>UN000481-GE</p>	<p>KIT 892 "S"</p> <p>UN000482-GE</p>

Comando incorporato e separato - Build-in control unit and remote control

KIT 891 "I" Comando incorporato Build in control			
Pos.	Q.ty	Pos.	Q.ty
11	2		
12	2		
14	1		
17	1		
18	1		
19	1		
20	1		
21	2		
22	1		
23	1		
24	1		
25	2		

Per / for AR 252

KIT 892 "S" Comando separato Remote control			
Pos.	Q.ty	Pos.	Q.ty
14	3	26	1
17	1	27	1
18	1	28	2
19	1		
20	1		
21	2		
22	1		
23	1		
24	1		
25	2		

Per / for AR 252