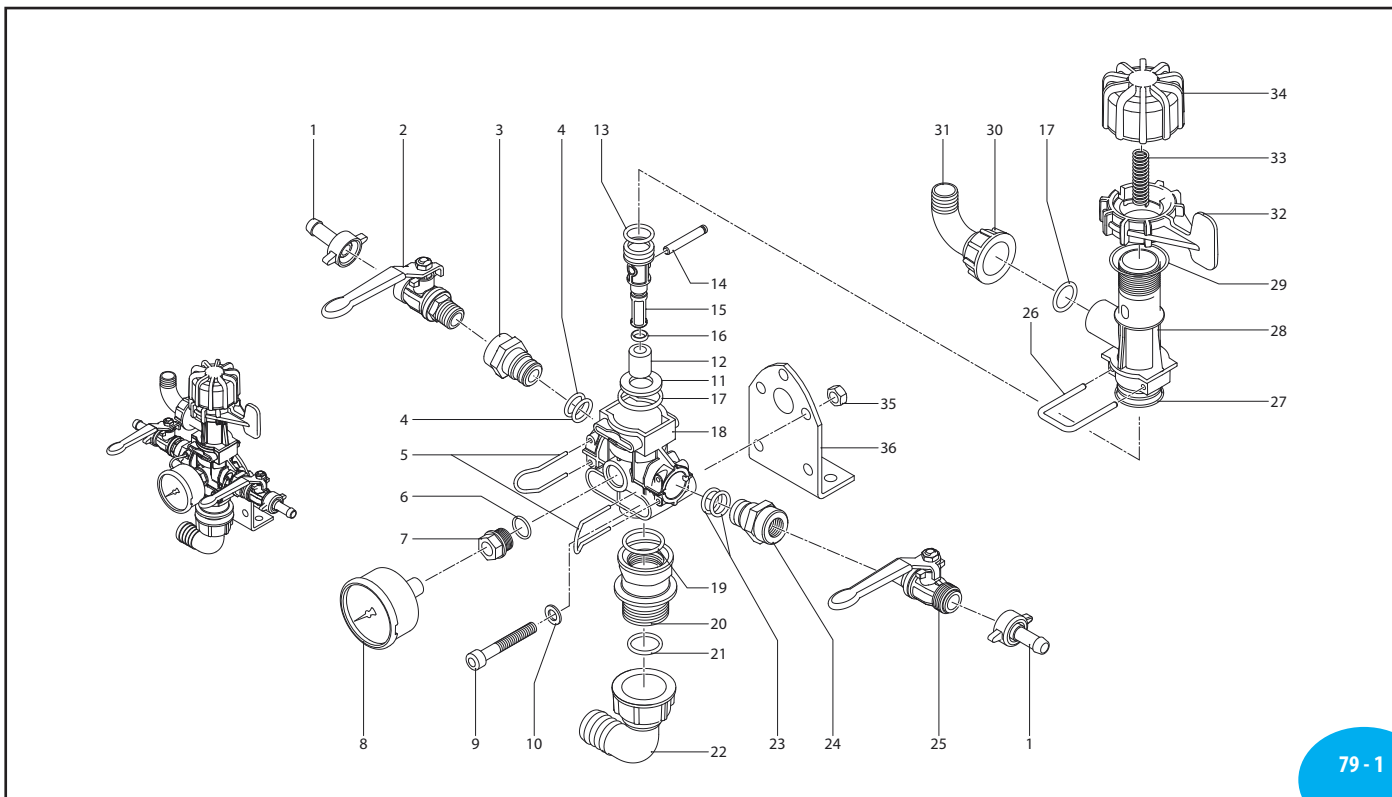


# ANNOVIREVERBERI

GS 25 S

3128601



SL000193-KV

Pos.	Cod.	Descrizione	Description	Q.ty	Note
1	110131	Girello 1/2"	Ring nut		
2	130492	Rubinetto 3/8"-1/2"M-M SX	Left valve	1	
3	3120421	Nipples 3/8"G	Threaded adapter		
4	640070	OR ø 13,95x2,62	O-Ring	2	
	640071	OR ø 13,95x2,62	O-Ring		
5	392580	Forcella	Fork	2	
6	740290	OR ø 14x1,78	O-Ring		
7	1880250	Riduzione manometro	Pipe reducer	1	
8	1880340	Manometro ø 50	Pressure gauge	1	
9	680360	Vite TCEI M8x50	Bolt		
10	380241	Rondella 8,5x15x1,5	Washer		
11	3120310	Pastiglia	Valve seat	1	
12	3120300	Pistone inferiore	Piston	1	
13	480440	OR ø 17,13x2,62	O-Ring	1	
	480441	OR ø 17,13x2,62	O-Ring		
14	1880240	Spinotto ø 6x39,8	Pin	1	
15	3120290	Pistone superiore	Piston	1	
16	1123660	OR ø 7,59x2,62	O-Ring	1	
	1123661	OR ø 7,59x2,62	O-Ring		
17	880830	OR ø 15,54x2,62	O-Ring		
	880831	OR ø 15,54x2,62	O-Ring		
18	3120390	Corpo regolatore a distanza	Body	1	
19	200540	OR ø 20,22x3,53	O-Ring	1	
	200541	OR ø 20,22x3,53	O-Ring		
20	3120660	Rid. M/F 1"G(M)3/4"G(F)	Reducer	1	
21	1140450	OR ø 20,24x2,62	O-Ring		
	1140451	OR ø 20,24x2,62	O-Ring		
22	3120460	Curva ø25	Elbow		
23	640070	OR ø13,95x2,62	O-Ring	2	
	640071	OR ø13,95x2,62	O-Ring		
24	3120420	Nipples 1/4"G	Threaded adapter		
25	130491	Rubinetto 3/8"-1/2"M-M DX	Valve	1	
26	3120320	Forcella regolatore	Fork	1	
27	880310	OR ø26,65x2,62	O-Ring	1	90Sh
	880311	OR ø26,65x2,62	O-Ring	1	90Sh
28	3120280	Corpo regolatore	Body	1	
29	961240	OR ø31,47x1,78	O-Ring	1	
30	550450	Girello	Ring nut		
31	550460	Curva	Elbow		
32	1880210	Ghiera sgancio pressione	Ring nut	1	
33	3120370	Molla	Spring	1	
34	1880220	Manopola	Adjustment knob	1	
35	390270	Dado M8	Nut		
36	320406	Staffa GS	Braket		

Gruppi comando  
Control units