



NRG 100 TSS

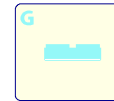
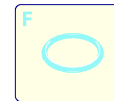
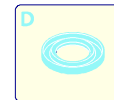
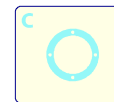
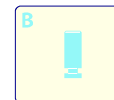
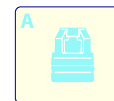
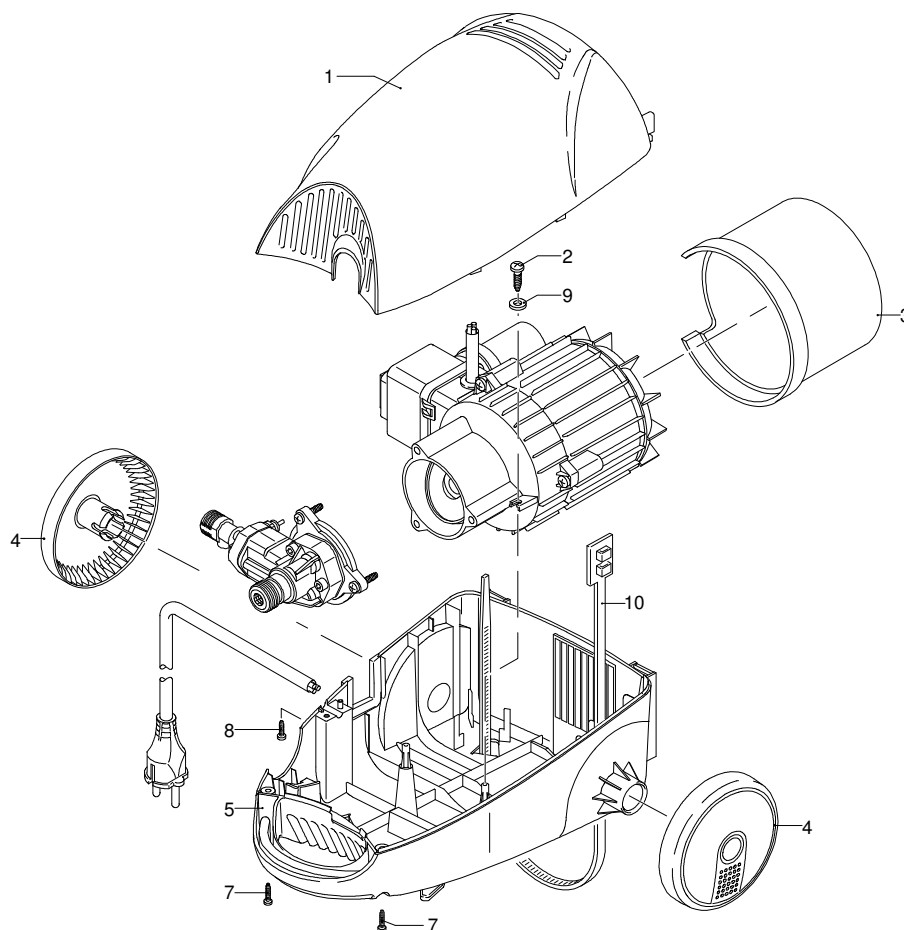
Ausführung:

Seriennummer:

Code: **12250**

 **230 V - 50 Hz**

 **schuko**



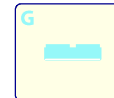
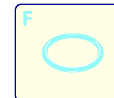
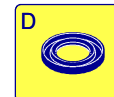
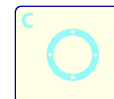
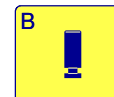
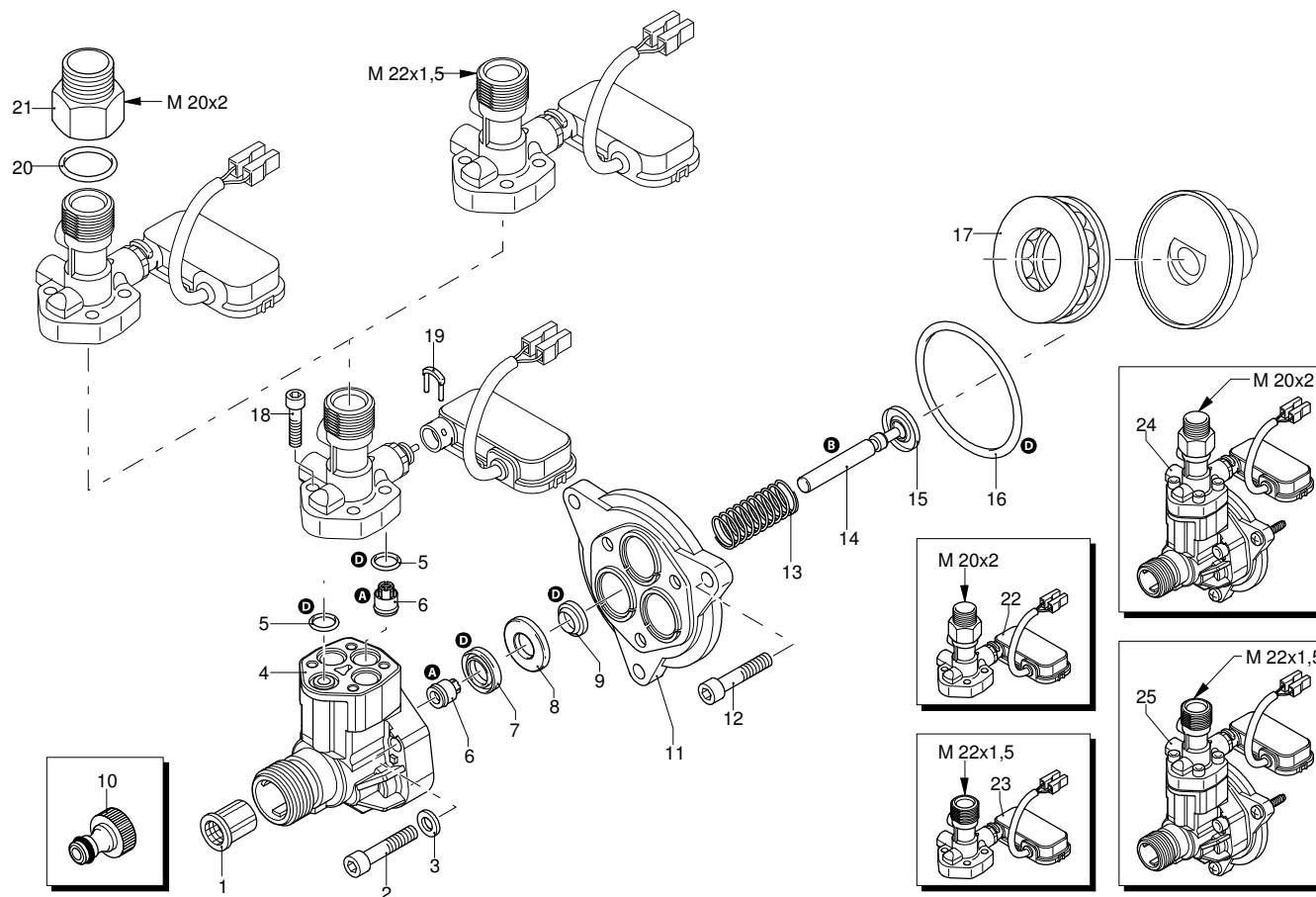
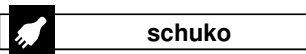
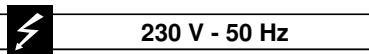
Gültigkeit	Pos.	Code	Bezeichnung	Menge
	1	2100230	Gelbe Haube	1
	2	2100300	Schraube	2
	3	2100070	Leitblech	1
	4	2100250	Rad	2
	5	2100240	Schwarze Haube	1
	7	2000110	Schraube	2
	8	2000210	Schraube	1
	9	480650	Unterlegscheibe	3
	10	50055	Schelle	1

NRG 100 TSS

Ausführung:

Seriennummer:

Code: **12250**



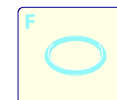
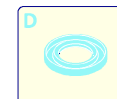
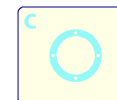
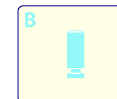
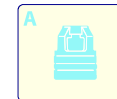
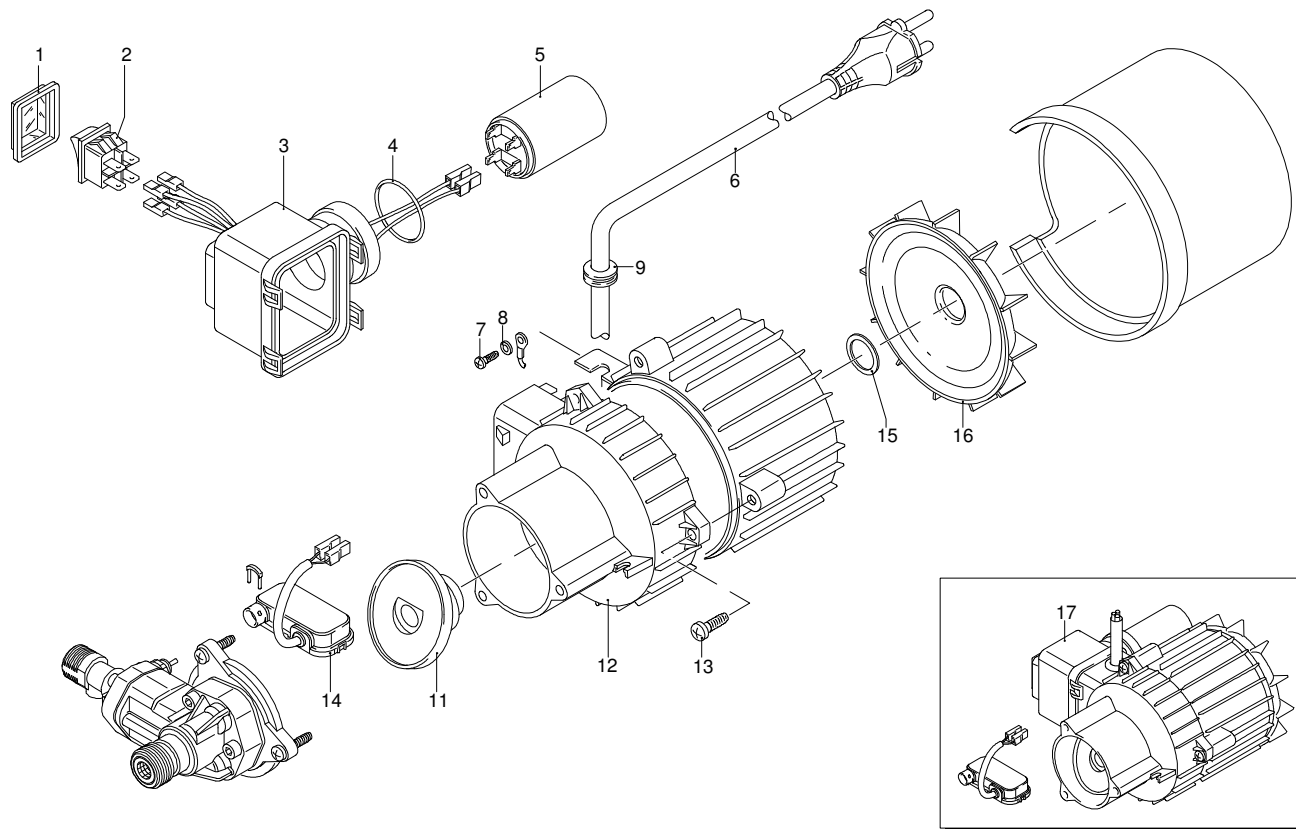
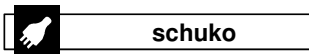
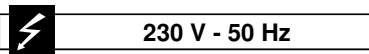
Gültigkeit	Pos.	Code	Bezeichnung	Menge
	1	1340260	Filter	1
	2	850850	Schraube	3
	3	2560690	Unterlegscheibe	3
	4	2560450	Kopf	1
	5	880840	O-Ring-Dichtung	4
	6	2109050	Ventil	6
	7	2101120	Wasserdichtung	3
	8	2020041	Ring	3
	9	1683500	Öldichtung	3
	10	1461470	Verbindungsstück	1
	11	2100030	Kolbenführung	1
	12	2100960	Schraube	3
	13	2020150	Feder	3
	14	2100130	Kolben	3
	15	2020140	Teller	3
	16	850840	O-Ring-Dichtung	1
	17	2021570	Lager	1
	18	2560720	Schraube	4
	19	2021960	Klemme	1
---	20	390180	O-Ring-Dichtung	1
---	21	2620760	Verbindungsstück	1
---	22	2317	Vormontage Verbindungsstück	1
I---	23	2253	Vormontage Verbindungsstück	1
I---	24	42323	Vormontage Pumpe TSS	1
I---	25	2331	Vormontage Pumpe TSS	1
A	A	2574	Satz Ventile	1
B	B	2508	Satz Kolben	1
D	D	2332	Satz Dichtungen	1

NRG 100 TSS

Ausführung:

Seriennummer:

Code: **12250**



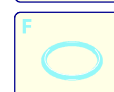
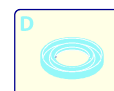
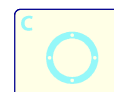
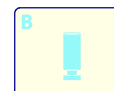
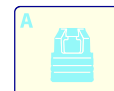
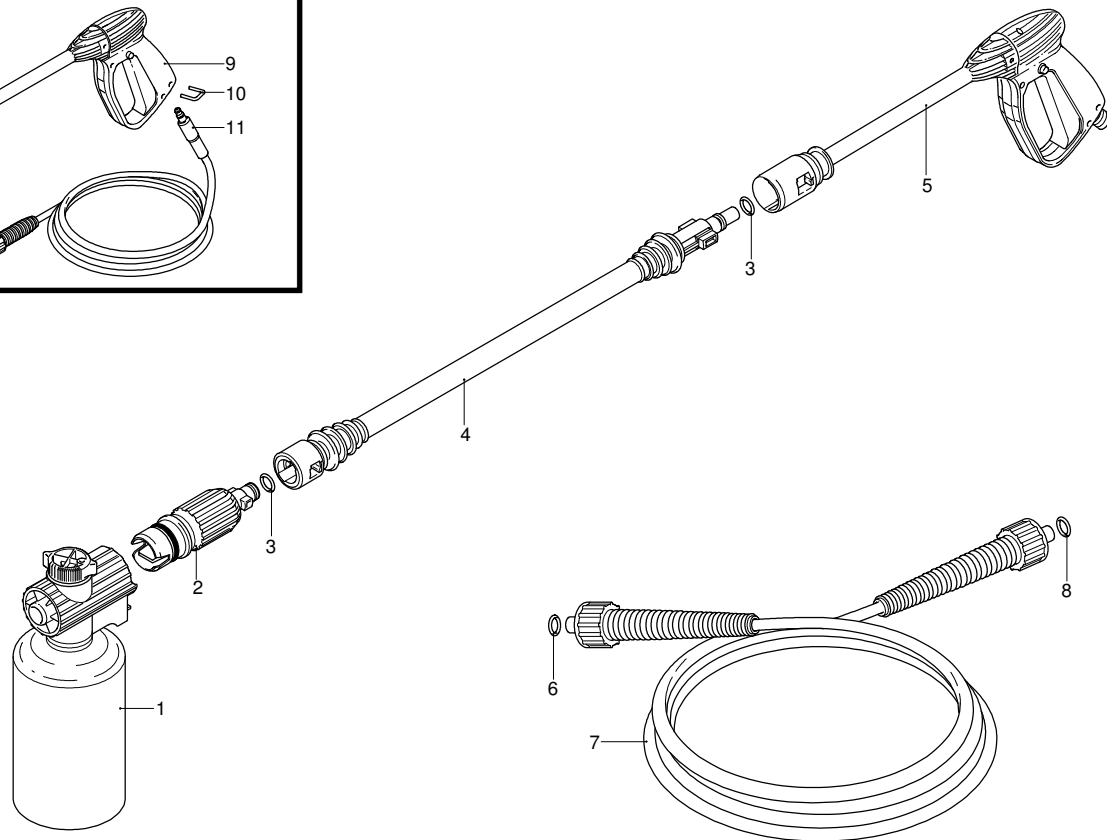
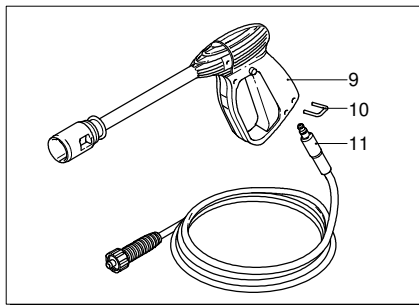
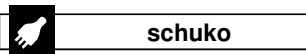
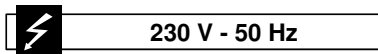
Gültigkeit	Pos.	Code	Bezeichnung	Menge
	1	2100280	Schutzkasten	1
	2	1682270	Schalter	1
	3	2100060	Kasten	1
	4	390201	O-Ring-Dichtung	1
	5	1683790	Kondensator	1
	6	2200090	Kabel	1
	7	2020570	Schraube	1
	8	1262400	Unterlegscheibe	1
	9	2100110	Kabeldurchführung	1
	11	2101711	Teller	1
	12	2109204	Vormontage Hauptteil Pumpe	1
	13	2100980	Schraube	3
	14	2029721	Vormontage Kasten TSS	1
	15	2020850	Unterlegscheibe	1
	16	1680250	Lüfter	1
	17	44010	Motor	1

NRG 100 TSS

Ausführung:

Seriennummer:

Code: **12250**



Gültigkeit	Pos.	Code	Bezeichnung	Menge
	1	40530	Tank	1
	2	40669	Düsenkopf	1
	3	1680220	O-Ring-Dichtung	2
	4	40667	Lanze	1
I----> 01-07	5	40666	Pistole	1
	6	1080250	O-Ring-Dichtung	1
I----> 01-07	7	2620420	Hochdruckschlauch	1
	8	2000770	O-Ring-Dichtung	1
---> 12-06	9	40409	Pistole	1
---> 12-06	10	2000080	Klemme	1
---> 12-06	11	2000420	Hochdruckschlauch	1