

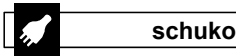
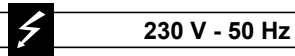
Modell PW 1800 N XR

Ausführung: PW 1800 N XR (08)

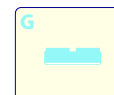
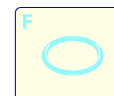
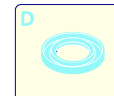
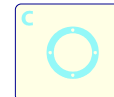
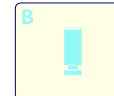
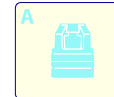
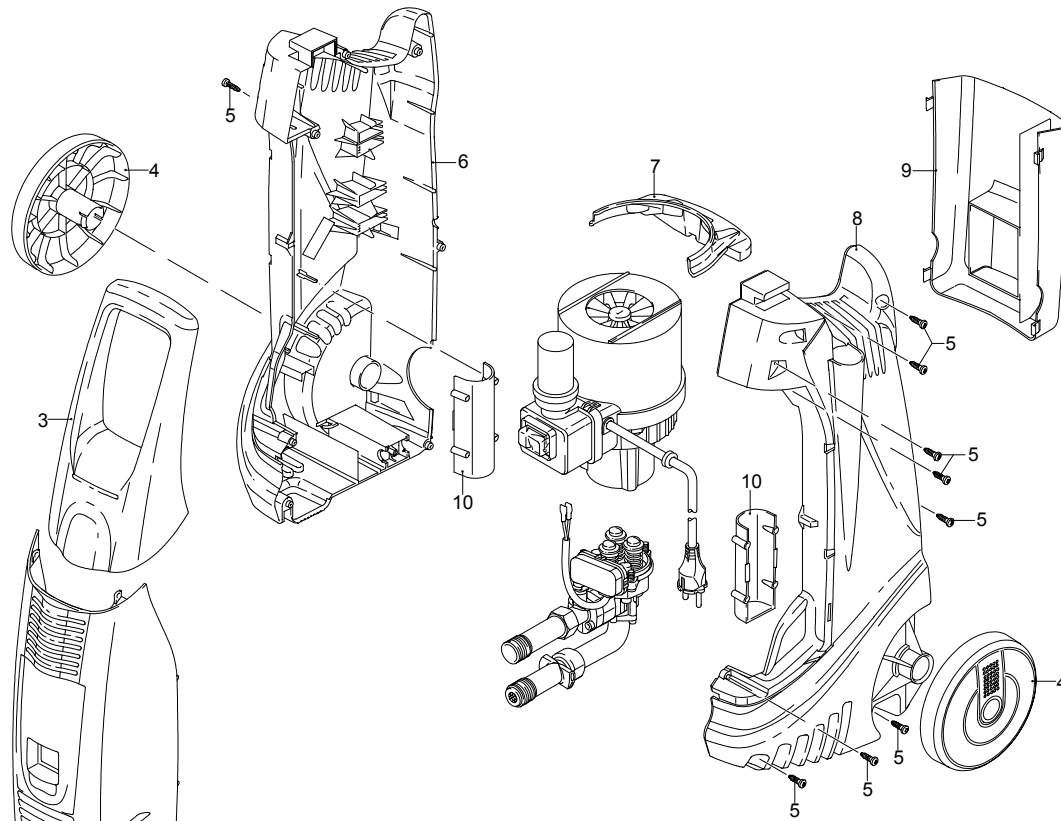
Seriennummer:

Code: 12623

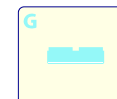
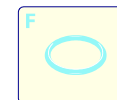
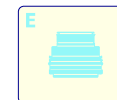
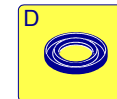
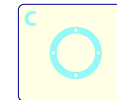
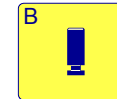
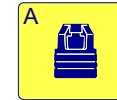
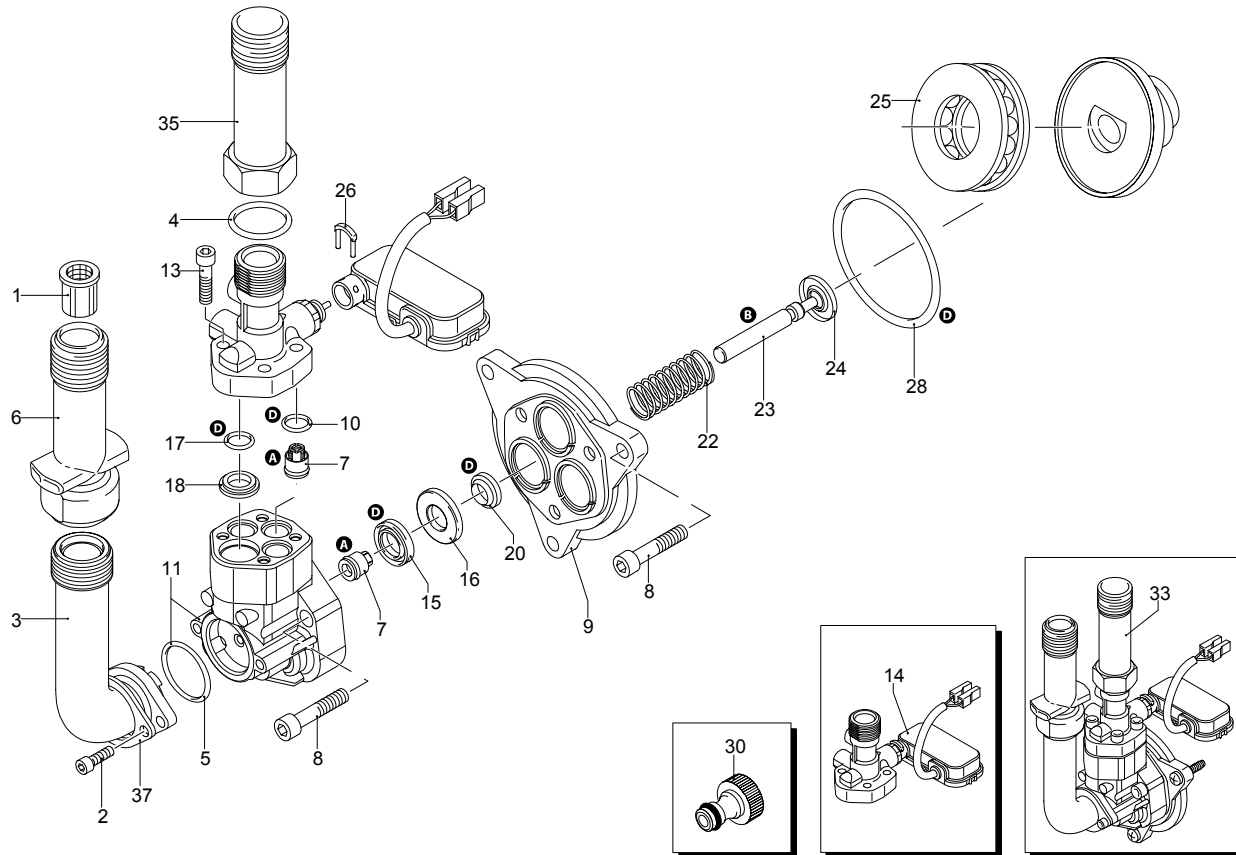
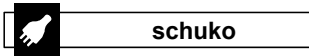
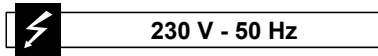
01/02/2010



| Gültigkeit | Pos. | Code | Bezeichnung | Menge |
|------------|------|---------|---------------------|-------|
| | 1 | 2180740 | Nutmutter | 1 |
| | 2 | 2440602 | Orangefarbene Haube | 1 |
| | 3 | 2440030 | Griff | 1 |
| | 4 | 2440071 | Rad | 2 |
| | 5 | 2100300 | Schraube | 10 |
| | 6 | 2440020 | Schwarze Haube | 1 |
| | 7 | 2440120 | Bügel | 1 |
| | 8 | 2440010 | Schwarze Haube | 1 |
| | 9 | 2440170 | Zubehörträger | 1 |
| | 10 | 2440150 | Halterung | 2 |



UN_CE_0147-EX



| Gültigkeit | Pos. | Code | Bezeichnung | Menge |
|------------|------|---------|-----------------------------|-------|
| | 1 | 1340260 | Filter | 1 |
| | 2 | 2101000 | Schraube | 2 |
| | 3 | 2100630 | Verbindungsstück | 1 |
| | 4 | 390180 | O-Ring-Dichtung | 1 |
| | 5 | 550350 | O-Ring-Dichtung | 1 |
| | 6 | 2440200 | Verlängerung | 1 |
| | 7 | 2109050 | Ventil | 6 |
| | 8 | 850850 | Schraube | 6 |
| | 9 | 2100030 | Kolbenführung | 1 |
| | 10 | 880840 | O-Ring-Dichtung | 3 |
| | 11 | 2122 | Kopf+O-Ring-Dichtung | 1 |
| | 13 | 1260760 | Schraube | 4 |
| | 14 | 2256 | Vormontage Verbindungsstück | 1 |
| | 15 | 2200141 | Wasserdichtung | 3 |
| | 16 | 2020041 | Ring | 3 |
| | 17 | 394280 | O-Ring-Dichtung | 1 |
| | 18 | 2560480 | Buchse | 1 |
| | 20 | 1683500 | Öldichtung | 3 |
| | 22 | 2020150 | Feder | 3 |
| | 23 | 2100130 | Kolben | 3 |
| | 24 | 2020140 | Teller | 3 |
| | 25 | 2021570 | Lager | 1 |
| | 26 | 2021960 | Klemme | 1 |
| | 28 | 850840 | O-Ring-Dichtung | 1 |
| | 30 | 1461470 | Verbindungsstück | 1 |
| | 33 | 42089 | Vormontage Pumpe TSS | 1 |
| | 35 | 2440440 | Verlängerung | 1 |
| | 37 | 2101450 | Flansch | 1 |
| A | | 2574 | Satz Ventile | 1 |
| B | | 2508 | Satz Kolben | 1 |
| D | | 2575 | Satz Dichtungen | 1 |

Modell PW 1800 N XR

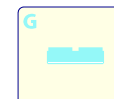
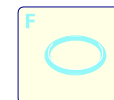
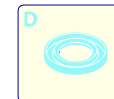
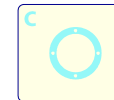
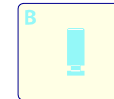
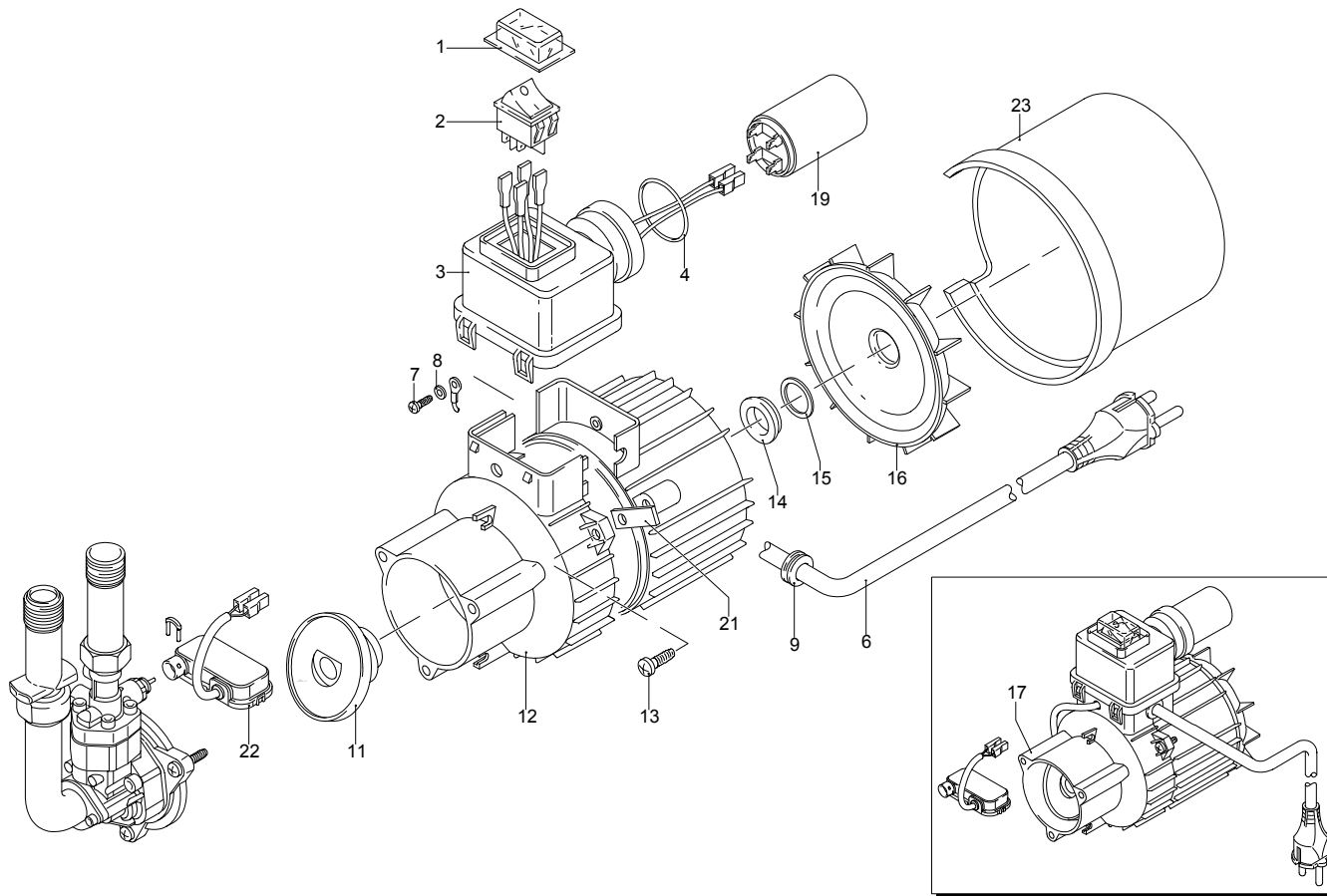
Ausführung: **PW 1800 N XR (08)**

Seriennummer:

Code: **12623**

230 V - 50 Hz

schuko



| Gültigkeit | Pos. | Code | Bezeichnung | Menge |
|------------|------|---------|----------------------------|-------|
| | 1 | 2100280 | Schutzkasten | 1 |
| | 2 | 1682270 | Schalter | 1 |
| | 3 | 2100060 | Kasten | 1 |
| | 4 | 390201 | O-Ring-Dichtung | 1 |
| | 6 | 1272600 | Kabel | 1 |
| | 7 | 2020570 | Schraube | 1 |
| | 8 | 1262400 | Unterlegscheibe | 1 |
| | 9 | 2100110 | Kabeldurchführung | 1 |
| | 11 | 2102170 | Teller | 1 |
| | 12 | 2109270 | Vormontage Hauptteil Pumpe | 1 |
| | 13 | 2100980 | Schraube | 3 |
| | 14 | 1340350 | Öldichtung | 1 |
| | 15 | 2020850 | Unterlegscheibe | 1 |
| | 16 | 1680250 | Lüfter | 1 |
| | 17 | 44189 | Motor | 1 |
| | 19 | 1682640 | Kondensator | 1 |
| | 21 | 2440160 | Platte | 3 |
| | 22 | 2029721 | Vormontage Kasten TSS | 1 |
| | 23 | 2102110 | Leitblech | 1 |



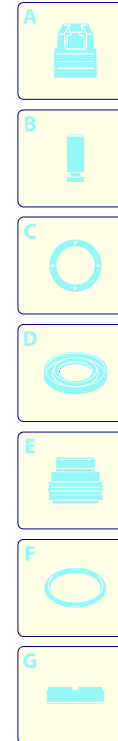
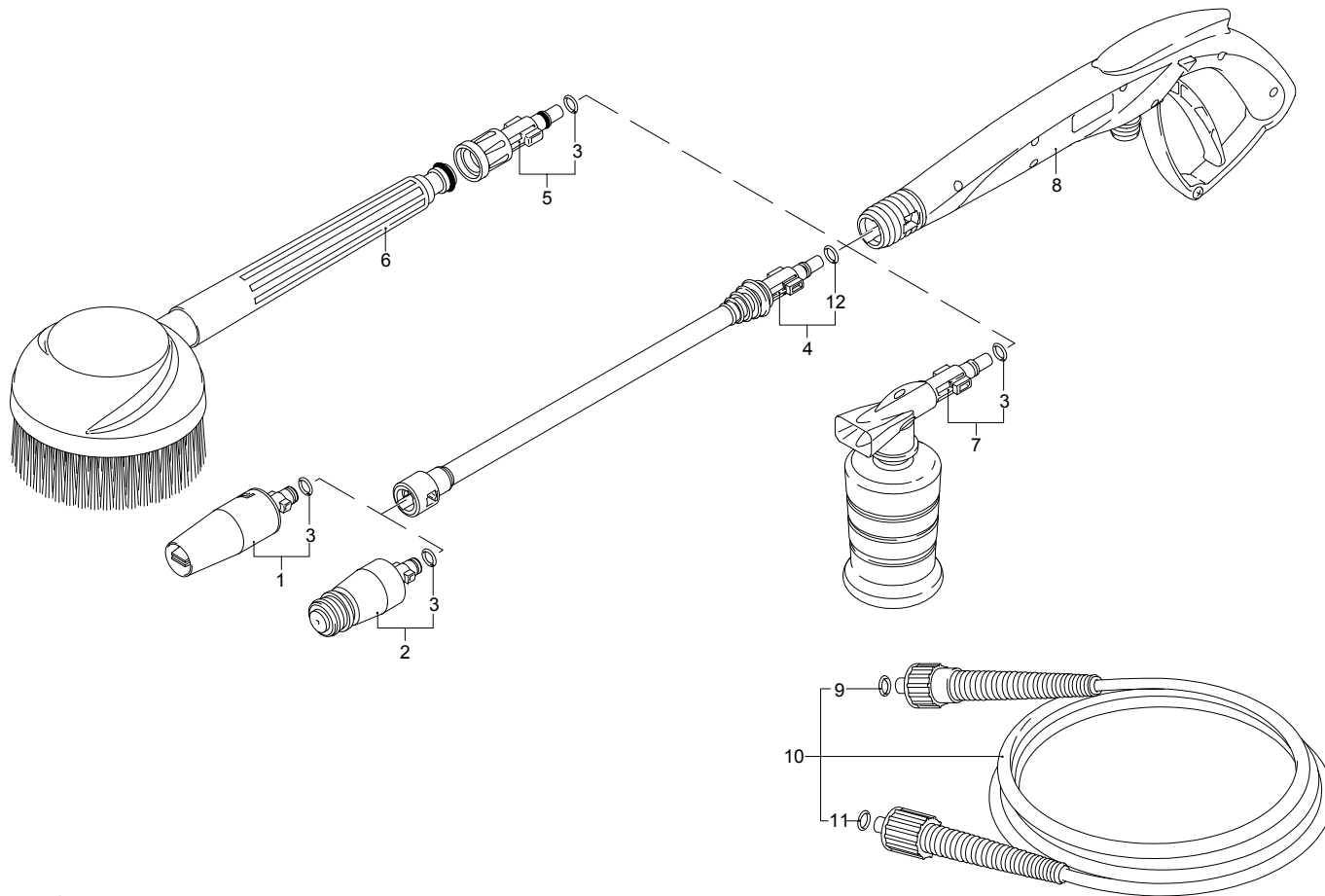
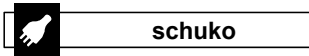
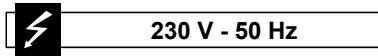
Modell PW 1800 N XR

Ausführung: **PW 1800 N XR (08)**

Seriennummer:

Code: **12623**

01/02/2010



| Gültigkeit | Pos. | Code | Bezeichnung | Menge |
|------------|------|---------|---------------------|-------|
| | 1 | 40481 | Düsenkopf | 1 |
| | 2 | 40343 | Düsenkopf Rotopower | 1 |
| | 3 | 1680220 | O-Ring-Dichtung | 4 |
| | 4 | 40667 | Lanze | 1 |
| | 5 | 40327 | Verbindungsstück | 1 |
| | 6 | 40365 | Drehbürste | 1 |
| | 7 | 40352 | Tank | 1 |
| | 8 | 40350 | Pistole | 1 |
| | 9 | 600180 | O-Ring-Dichtung | 1 |
| | 10 | 2620400 | Hochdruckschlauch | 1 |
| | 11 | 2000770 | O-Ring-Dichtung | 1 |
| | 12 | 880840 | O-Ring-Dichtung | 1 |

UN_CE_0150-AW