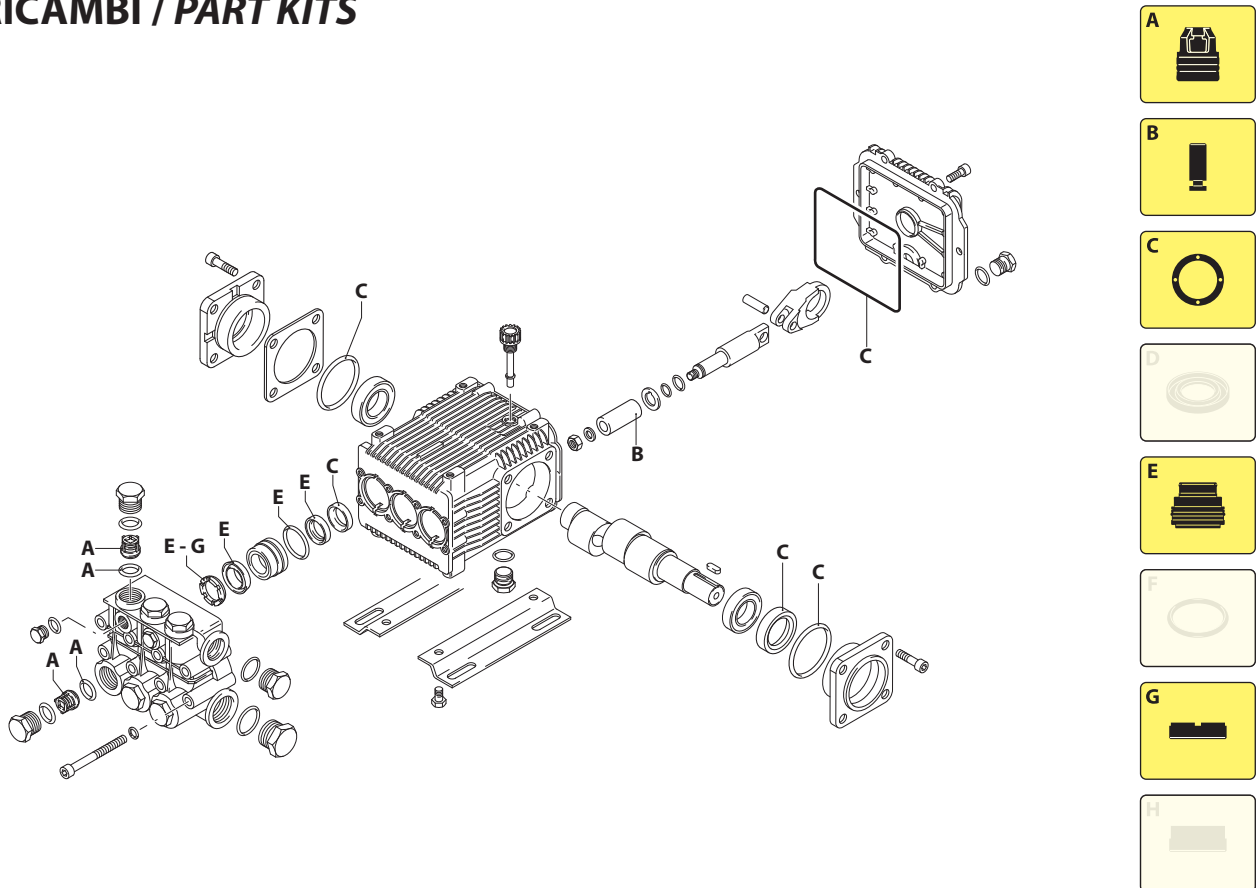


UN002227-LW

KIT RICAMBI / PART KITS



UN002228-LW

228 Series

RCW 1450 rpm N version ø 24 m

11.10

15.15

15.20



| Pos. | Cod. Part n° | Denominazione | Description | Q.tà Q.ty | Note Vedi / See | Pos. | Cod. Part n° | Denominazione | Description | Q.tà Q.ty | Note Vedi / See |
|------|--------------|--------------------|----------------------|-----------|-----------------|------|--------------|-----------------------|--------------------|-----------|-----------------|
| 1 | 960160 | OR Ø 17,86x2,62 | O-Ring | 6 | | 44 | 1263130 | Vite TE M 8x12 | Screw | 4 | Optional |
| 2 | 1380740 | Tappo valvola | Plug | 6 | | 45 | 1380141 | Piede | Base | 2 | Optional |
| 3 | 1389051 | Valvola completa | Complete valve | 6 | | 46 | 1981180 | Tappo 3/8"G Nickel | Plug | 1 | |
| 4 | 880830 | OR Ø 15,54x2,62 | O-Ring | 6 | | 47 | 180101 | OR Ø 17,5x2 | O-Ring | 1 | |
| 5 | 1380690 | Tappo 1/4" G | Plug | 2 | | 48 | 960870 | Tappo 1/2"G | Plug | 1 | |
| 6 | 820510 | OR Ø 10,82x1,78 | O-Ring | 2 | | 49 | 1381070 | Testa pompa | Pump head | 1 | |
| 11 | 960110 | Anello appoggio | Support ring | 3 | | 50 | 1383440 | Vite TCEI M 8x70 | Screw | 8 | C=20Nm |
| 12 | 1382740 | Guarnizione | Gasket | 3 | | 69 | 1381850 | Rondella | Washer | 8 | |
| 13 | 1380090 | Guida pistone | Piston guide | 3 | | 70 | 1080550 | Anello antiestrusione | Ring | 3 | |
| 14 | 961240 | OR Ø 31,47x1,78 | O-Ring | 3 | | 77 | 1383140 | Cuscinetto | Bearing | 1 | |
| 15 | 880330 | Guarnizione | Gasket | 3 | | 80 | 1389261 | Prem. testa | Pump head assembly | 1 | |
| 16 | 1383130 | Anello tenuta | Seal | 3 | | 86 | 1260250 | Livello olio | Oil indicator | 1 | ⊕ |
| 17 | 850370 | Vite TCEI M 8x16 | Screw | 8 | | 87 | 1260430 | Anello elastico | Snap ring | 1 | ⊕ |
| 18 | 1380050 | Supp. cusc. chiuso | Closed bearing supp. | 1 | | 88 | 1780690 | Disco di contrasto | Disc | 1 | ⊕ |
| 19 | 640030 | OR Ø 60x2,62 | O-Ring | 2 | | 89 | 1140450 | OR Ø 20,24x2,62 | O-Ring | 1 | ⊕ |
| 20 | 2280340 | Cuscinetto | Bearing | 1 | | | | | | | |
| 21 | 1382770 | Corpo pompa | Pump housing | 1 | | | | | | | |
| 22 | 880130 | Tappo olio | Oil cap | 1 | | | | | | | |
| 23 | 1260110 | Dado M 8 | Nut | 3 | ⊕ C=20Nm | | | | | | |
| 24 | 1260100 | Rondella | Washer | 3 | | | | | | | |
| 25 | 1383230 | Pistone | Piston | 3 | | | | | | | |
| 26 | 1383350 | Disco separatore | Spacer | 3 | | | | | | | |
| 27 | 480480 | OR Ø 4,48x1,78 | O-Ring | 3 | | | | | | | |
| 28 | 1383240 | Pistone di guida | Guiding piston | 3 | | | | | | | |
| 29 | 1380060 | Spinotto | Piston pin | 3 | | | | | | | |
| 30 | 1383020 | Biella bronzo | Bronze con rod | 3 | | | | | | | |
| 34 | 1780510 | OR Ø 106x3 | O-Ring | 1 | | | | | | | |
| 35 | 1789010 | Coperchio completo | Complate cover | 1 | | | | | | | |
| 36 | 1343510 | Vite TCEI M 6x14 | Screw | 6 | | | | | | | |
| 37 | 2280100 | Albero eccentrico | Crank shaft | 1 | ○ Marcato 5 | | | | | | |
| | 2280060 | Albero eccentrico | Crank shaft | 1 | ● Marcato 1 | | | | | | |
| 38 | 1380520 | Linguetta | Key | 1 | | | | | | | |
| 39 | 180340 | Anello tenuta | Seal | 1 | | | | | | | |
| 40 | 1382810 | Spessore 0,05 mm | 0,05 mm shim | 1÷3 | | | | | | | |
| | 1380120 | Spessore 0,10 mm | 0,10 mm shim | 1÷3 | | | | | | | |
| | 1380130 | Spessore 0,20 mm | 0,20 mm shim | 1÷3 | | | | | | | |
| | 1380530 | Spessore 0,25 mm | 0,25 mm shim | 1÷3 | | | | | | | |
| 41 | 1380040 | Supp. cusc. aperto | Open bearing supp. | 1 | | | | | | | |
| 42 | 740290 | OR Ø 14x1,78 | O-Ring | 4 | ⊕ | | | | | | |
| 43 | 1980740 | Tappo 3/8"G | Plug | 3 | ⊕ | | | | | | |

⊕ Compreso nel cod. 1789010 / Part of part n° 1789010

KIT RICAMBI - PART KITS

| A=KIT 2864 valvole valves | | B=KIT 2500 pistoni pistons | | C=KIT 2528 tenute olio oil seals | | E=KIT 2502 tenute acqua water seals | |
|---------------------------------|------|----------------------------------|------|--|------|---|------|
| Pos. | Q.ty | Pos. | Q.ty | Pos. | Q.ty | Pos. | Q.ty |
| 3 | 6 | 25 | 3 | 16 | 3 | 11 | 3 |
| 4 | 6 | | | 19 | 2 | 12 | 3 |
| | | | | 34 | 1 | 14 | 3 |
| | | | | 39 | 1 | 15 | 3 |

| G=KIT 1829 anelli appoggio support rings | | | | | | | |
|--|------|------|------|------|------|------|------|
| Pos. | Q.ty | Pos. | Q.ty | Pos. | Q.ty | Pos. | Q.ty |
| 11 | 3 | | | | | | |

SIMBOLOGIA - SYMBOLS

○ Per / For
RCW 11.10

● Per / For
RCW 15.15
RCW 15.20

C Tolleranza coppia di serraggio 0÷10% / Tightening torque tolerance 0÷10%
⊕ Avvitare con Loxeal 55-14 / Screw with Loxeal 55-14

| Olio - Oil | |
|-------------|---------------------|
| Tipo / Type | Quantità / Quantity |
| ISO VG 220 | 0,435 Kg |